

Page Start

The Page Starts Here

[Home](#) [Windows XP Tips](#) [Windows 7 Korner](#) [Windows 8 Korner](#) [Windows 9 Korner](#) [Dual Boot Korner](#) [Random Thoughts](#)

Quick Takes

How to fix Error code: 0x81000033:

The fix involves increasing the default size of the 'System Reserved' which by default on a clean install only contains the BCD Store which Windows 7 needs to boot from. The 100MB partition will be resized to about 450MB, a 350MB increase. However you will need to use a third party utility that can boot from a CD to make the changes in partition size as Windows 7 Disk Management can does not have the ability to make the necessary changes.

Warning: There is a catch 22 in that Partition Wizard, EASEUS Partition Master or Gparted (if you are familiar using it) all recommend you create an Image Backup before you make any partition changes. Obviously Backup and Restore is not working so what do you do. The solution is simple: Download and install the free trial version of Acronis True Image Home. Use it to make a backup to you external USB drive (Don't forget to create the Acronis 'Rescue CD'). I strongly recommend you do this as a fail safe method of recovering your PC should something go wrong.

Download page: <http://www.acronis.com/homecomputing/products/trueimage/index.html>

True Image User Guide and documentation:

<http://www.acronis.com/homecomputing/download/docs/>

How to increase the size of the 'System Reserved' partition:

Utilites

Partition Wizard Home Edition: I had to use the bootable CD as version 5.2 for Windows has a bug which prevents the actually resizing of the Windows partition while Windows 7 is running. The screen shots are made from within Windows but the actual interface and steps are identical when performed using the boot CD.

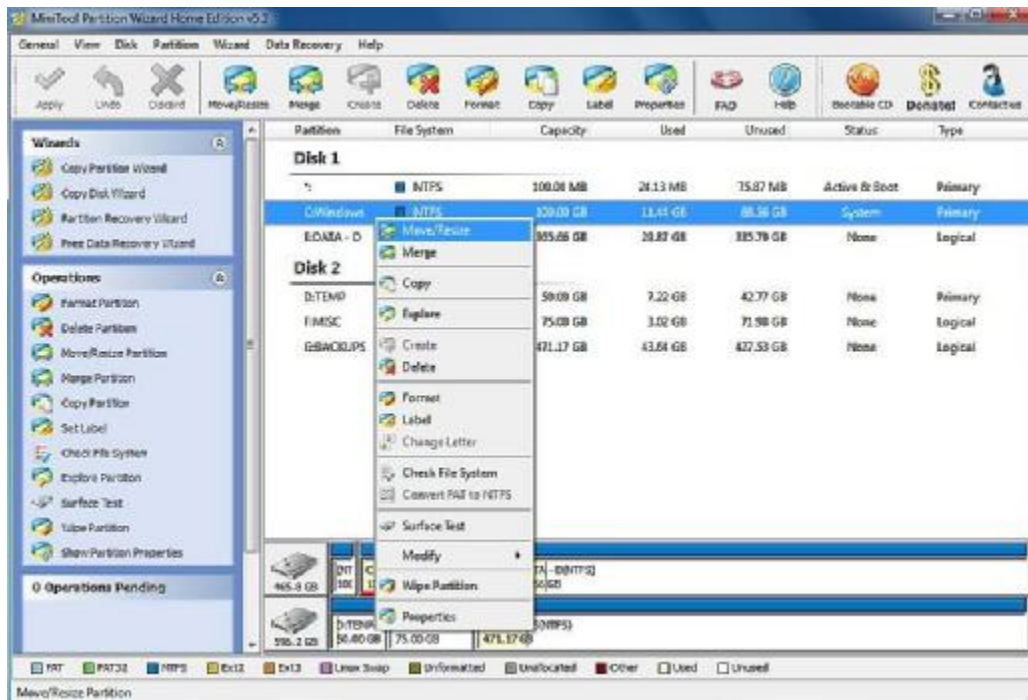
<http://www.partitionwizard.com/>

EASEUS Partition Master Home Edition: I also performed the same sequence of steps as detailed below using Partition Master as an alternative to Partition Wizard. The Partition Master interface looks almost identical to Partition Wizard. Although I did not include any screen shots when using Partition Master you should have not problem using this guide with Partition Master as the steps are the same.

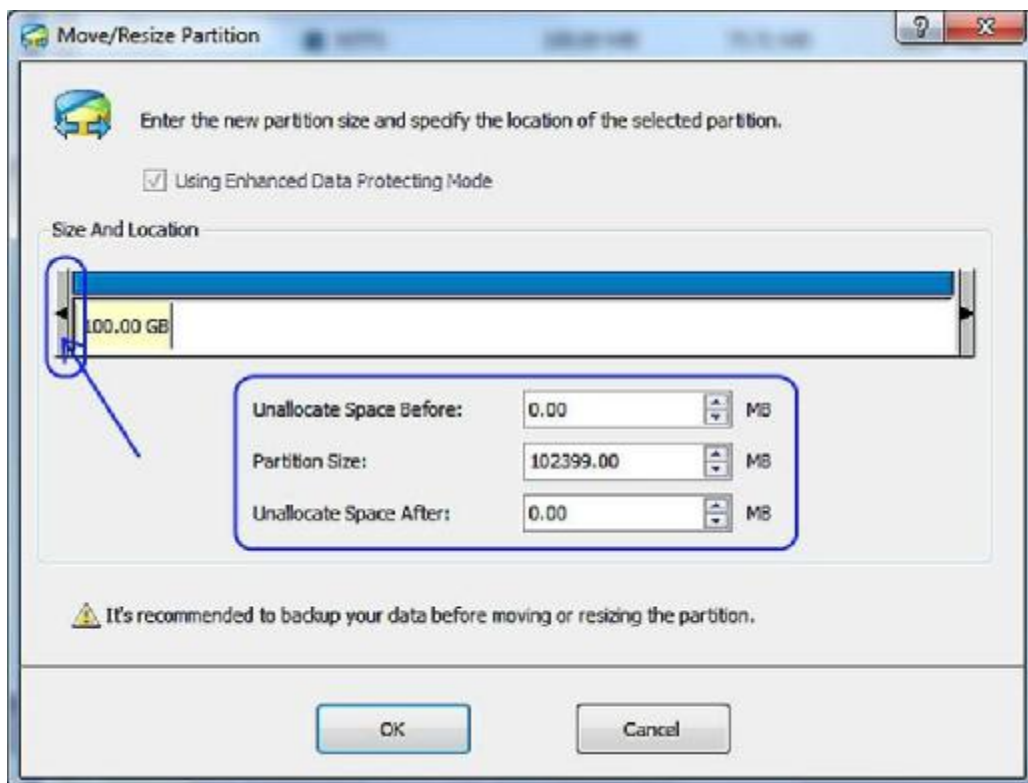
<http://www.partition-tool.com/personal.htm>

Step by Step guide:

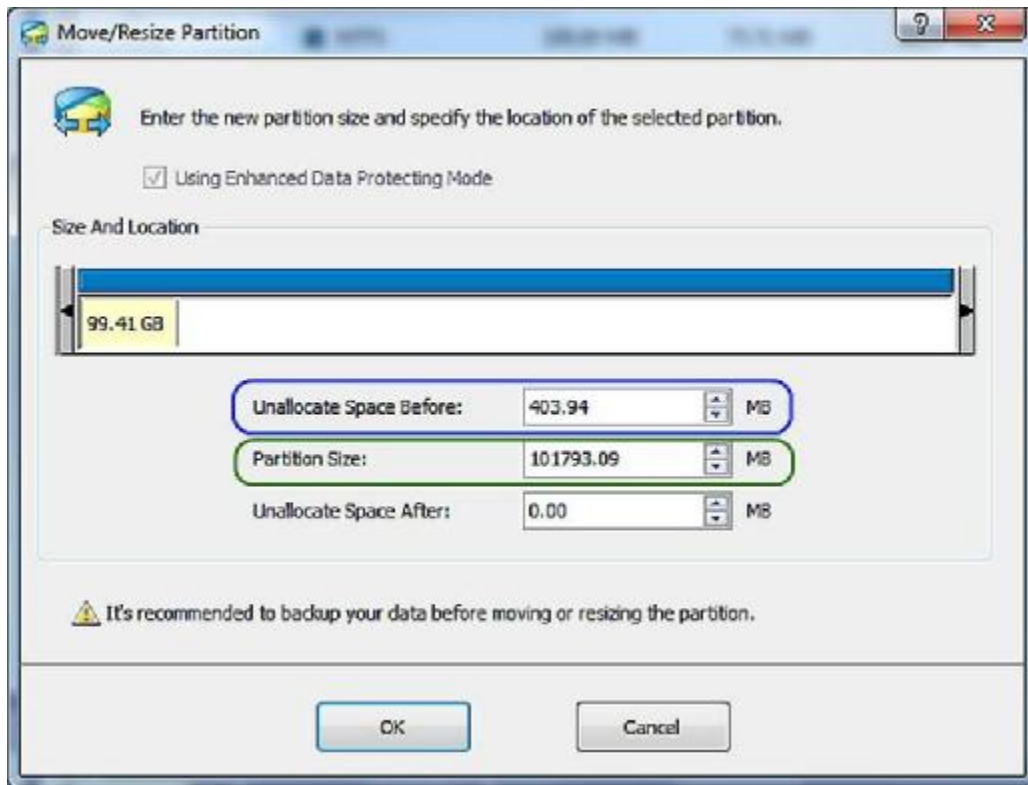
- 1) Download the Partition Wizard bootable CD .iso file and use it to create/burn a bootable CD.
- 2) Boot from the Partition Wizard CD.
- 3) Right click on the C: Windows partition and select the Move/Resize option.



4) Notice the left end of the partition map, This marks the beginning of the C: Windows partition. Also the 'Unallocated Space Before' and 'Unallocated Space After' values both have a value of 0.00. The 100GB Windows 'Partition Size' = 102399.00 (Binary value) from which 350MB will be made available at the beginning of the partition. Note: This example uses a 100GB partition, your Windows partition size may be smaller or larger than this example but the technique will be the same. The part in Yellow represents the current partition size.

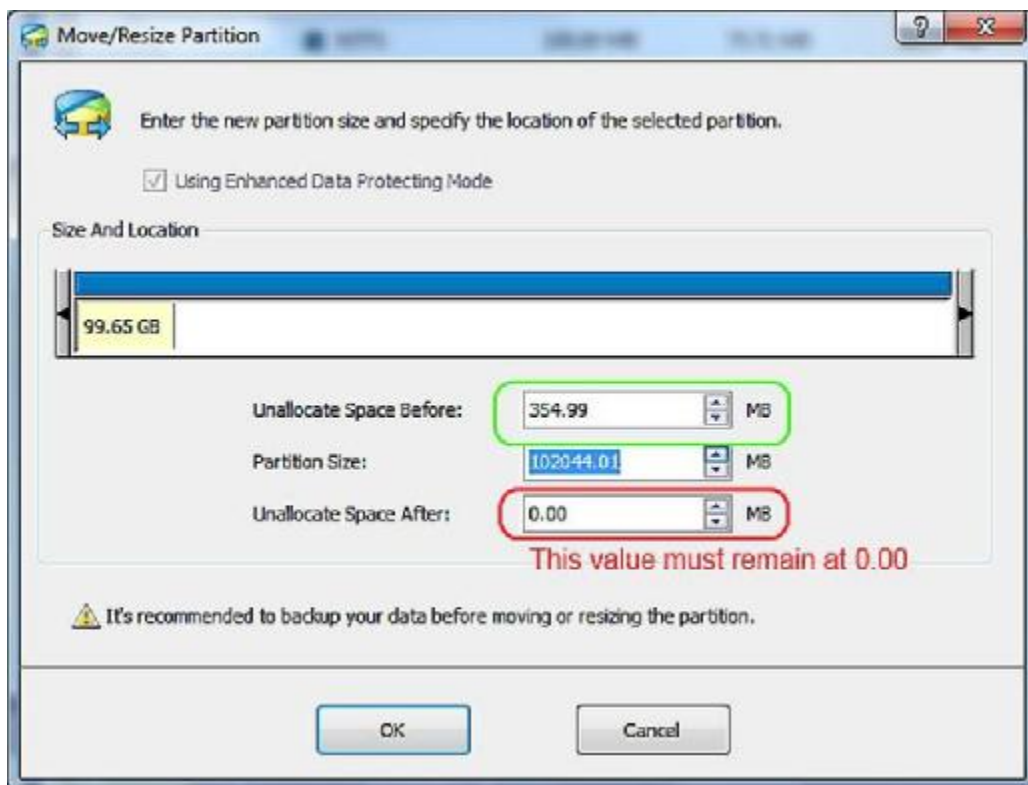


5) Move your mouse cursor over the left edge (beginning) of the map area until you see the four pointer arrow change to a Left/Right slider. Left click and move the slider slowly until you see a value slightly greater than 350MB displayed in the 'Unallocated Space Before' box (Outlined in Blue).

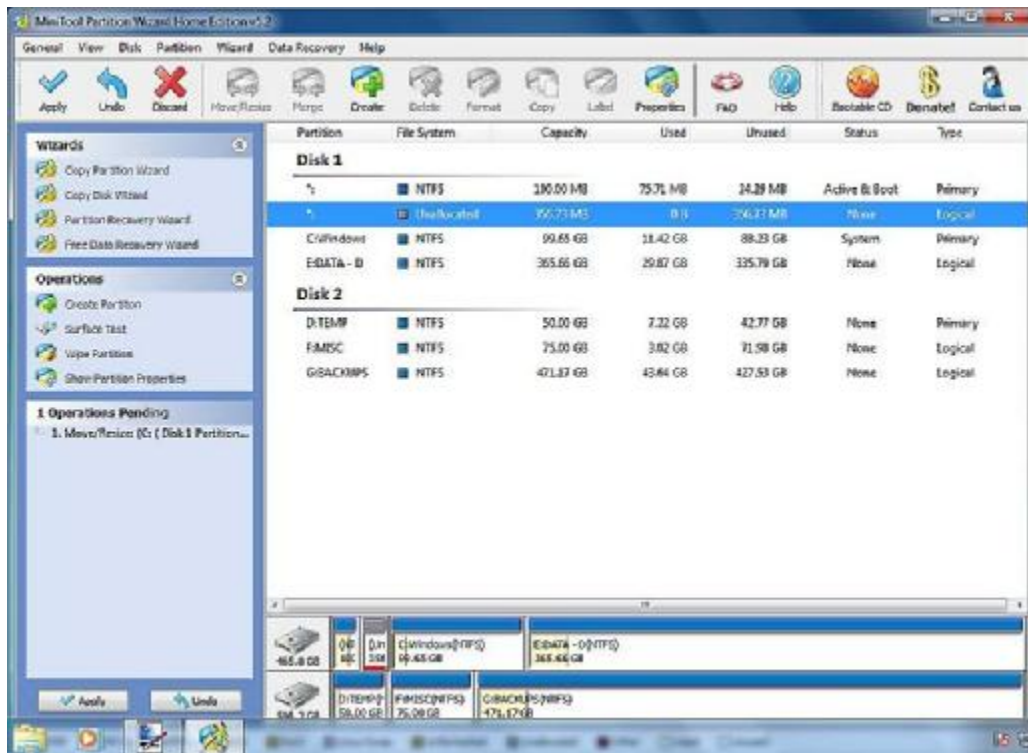


6) Adjust the 'Partition Size' value (I outlined this in Green for clarification as shown above) using the small up and down arrows at the right hand end of the 'Partition Size' box. Remember we want to add another 350MB (decimal value, 358.40MB binary) to the 'System Reserved' partition, therefore use the 'Partition Size' up arrow to slowly change the value displayed in the 'Unallocated Space Before' box to a value equal to or slightly less than 358.40MB as shown below.

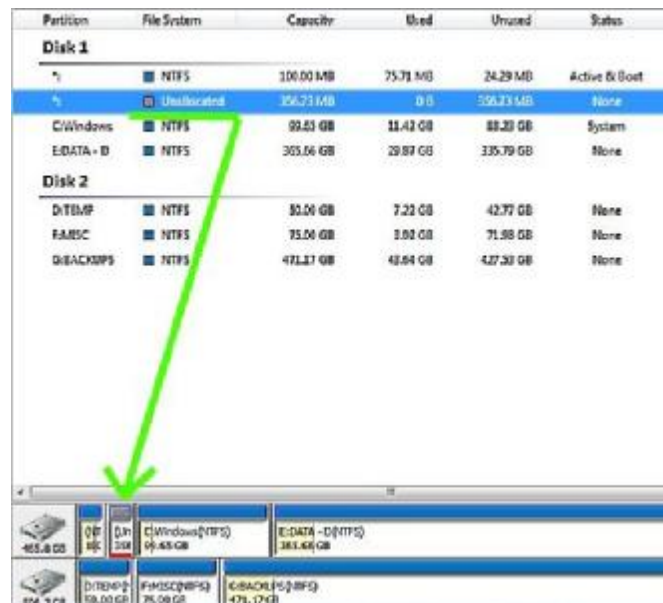
Note: The value for the 'Unallocated Space After' must remain at zero. If you need to try again just click on the cancel button repeat steps 5 and 6 until you reach an acceptable value of 358.40MB or slightly less.



7) Click the 'OK' button to accept the change. Notice that the 'Operations Pending' box located in the lower left will now display one operation named Move/Resize. Also note that the partition list and map will show a small unallocated area on the disk just in front of the C: Windows partition and after the small 100MB System Reserved partition.



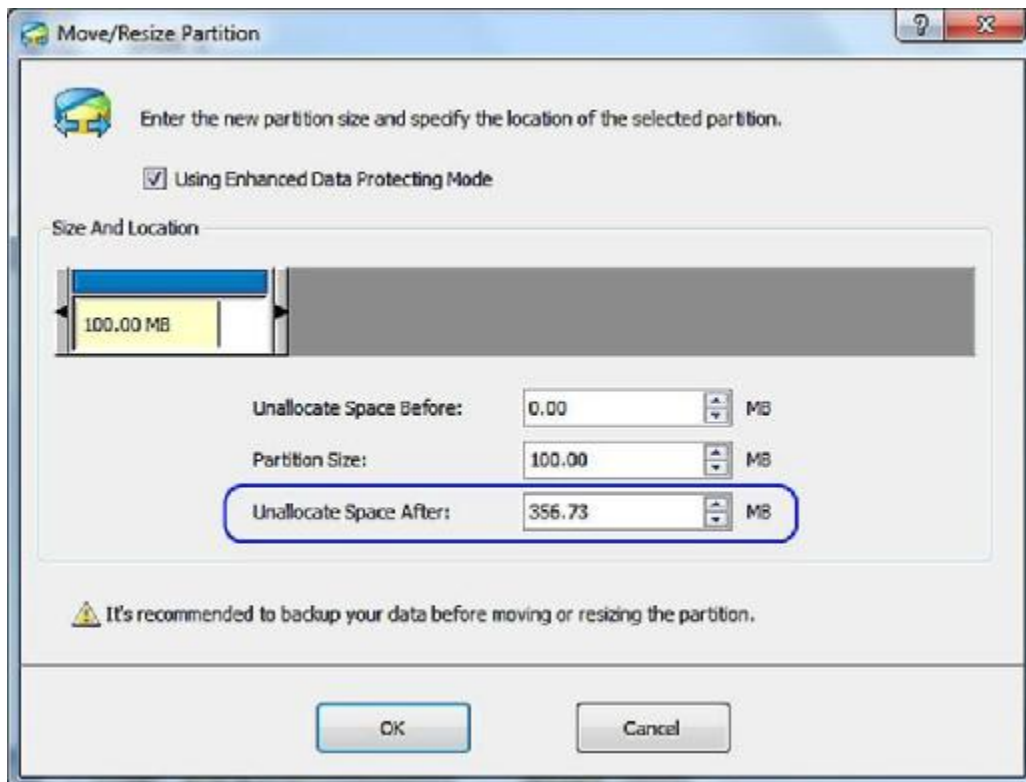
8) If the pending changes and partition map look similar to that shown below then continue to step number 9. Click the 'Apply' button to make the change permanent. Otherwise if you need to retry then click the 'Undo' button and repeat steps 5 to 7. You will note that the 100MB partition plus the 356.7 of "Unallocated" space when added together in step 9 will be slightly less than 500MB, which is the max allowed size.

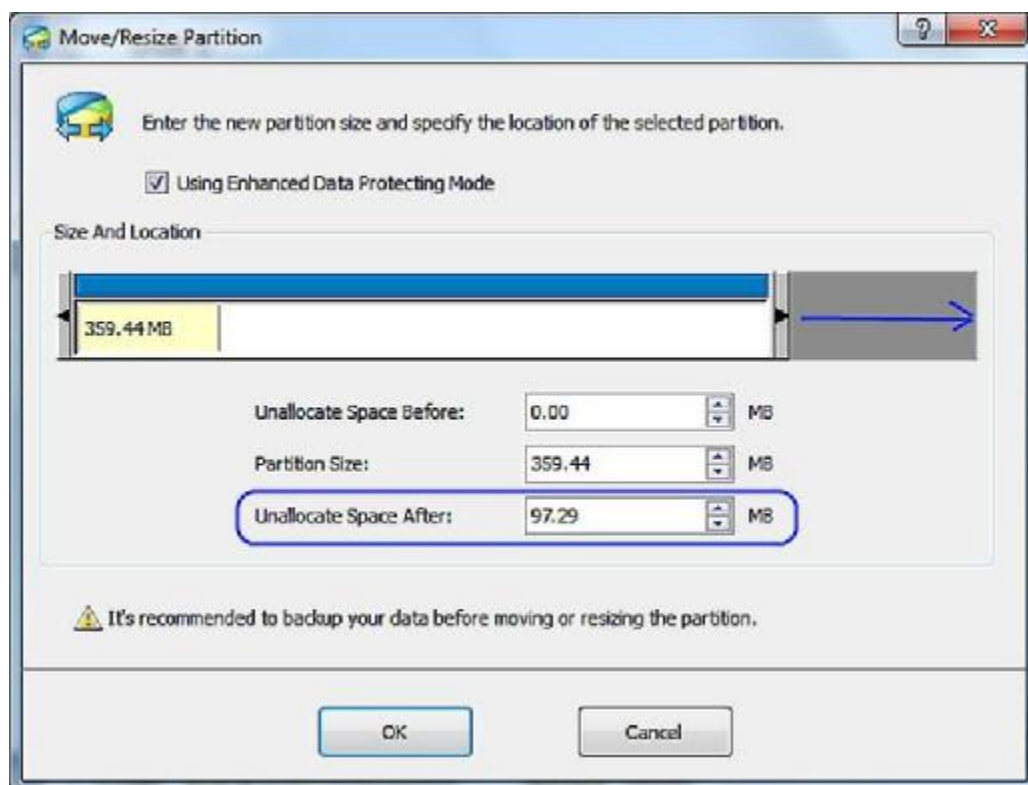
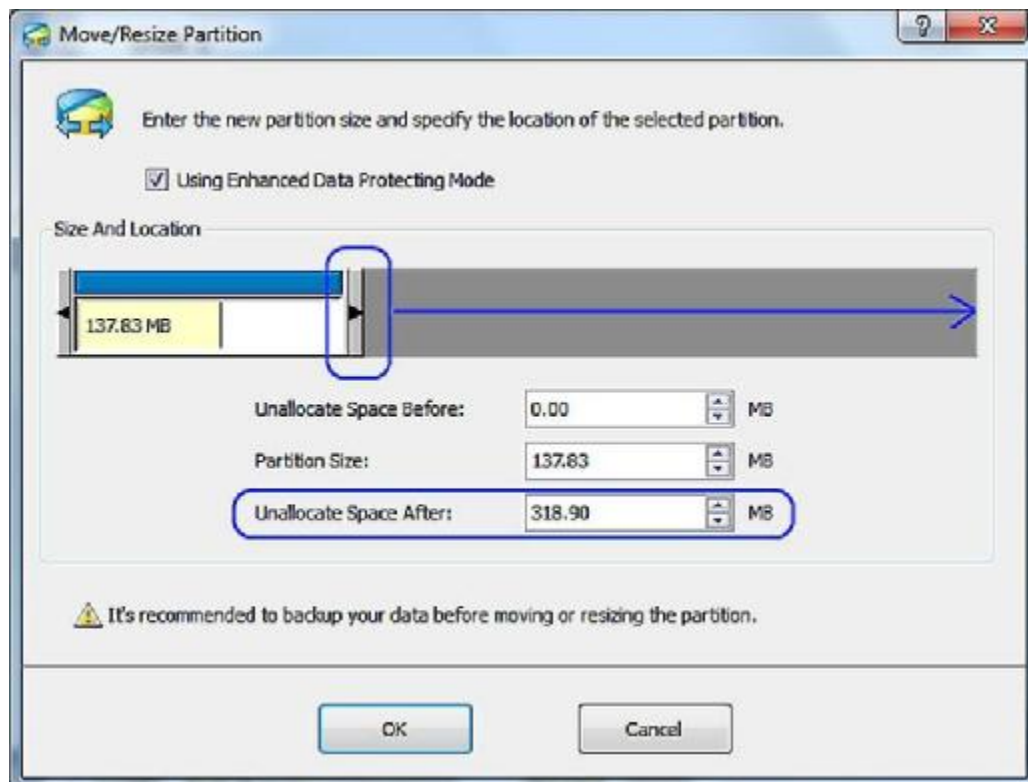


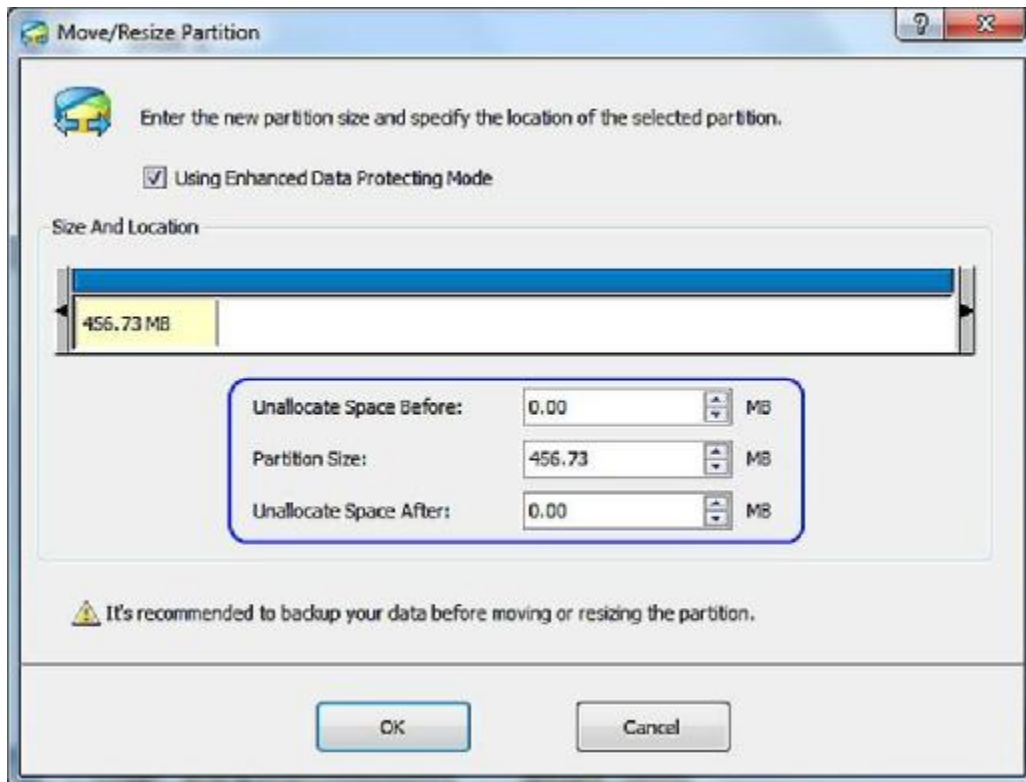
9) Next the 100MB System Reserved partition must be 'Extended' to include the "Unallocated" space you defined in the previous steps. Right click on the 100MB partition and select 'Move/Resize'.



10) The next task is to change the 'Unallocated Space After' (this is the space you made available in step #6) from the value created in step 6 and as displayed in the 'Move/Resize Partition' window. The quickest way to do this is to move the mouse cursor over to the right edge of the partition and drag it all the way to the right edge at which point the 'Unallocated Space After' value should be zero and the 'Partition Size' should be around 450MB as shown in the series of screen shots shown below.





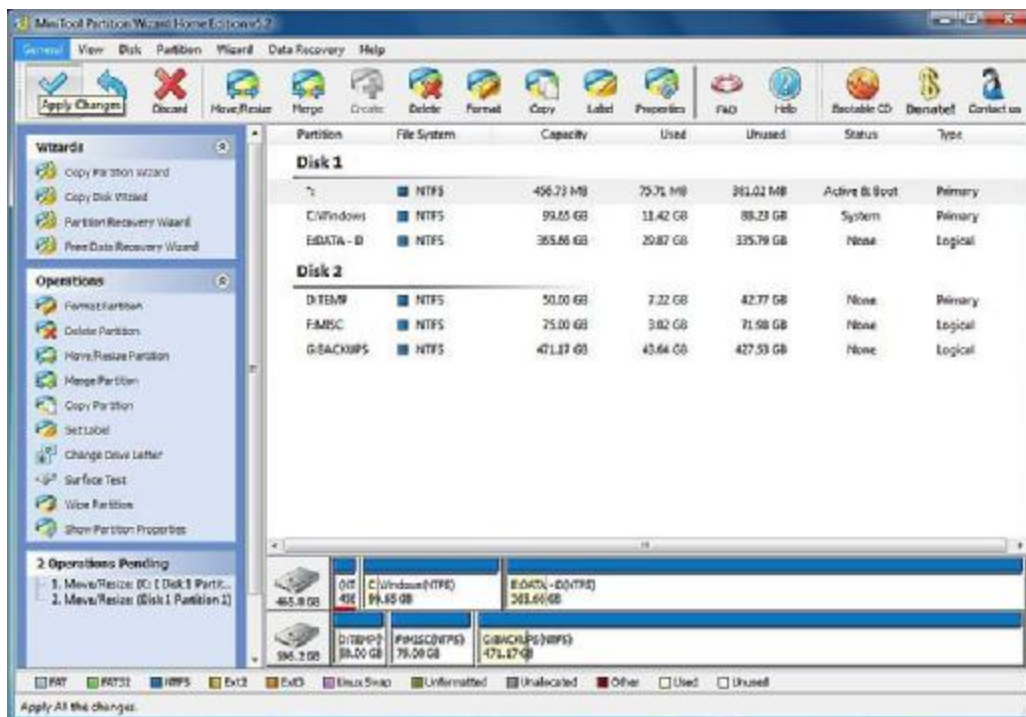


Once both the 'Unallocate Space Before' and 'Unallocate Space After' values both equal 0.00 the 'Partition Size' should now be approximately 450MB in size.

Note: This final value for the 'System Reserved' partition should not closely approach or exceed 500MB.

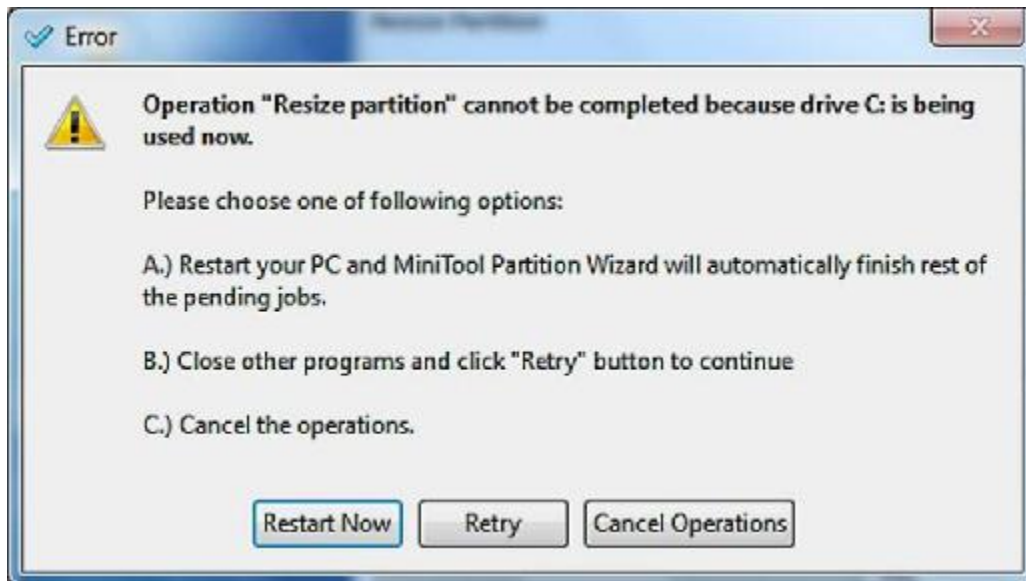
10) Click the 'OK' button to accept the partition values.

11) There should now be 2 'Operations Pending', click on the 'Apply Changes' icon located in the upper left corner and click 'Yes' to apply the pending changes. This will initiate the process of changing the partitions to match the sizes you choose.





12) You will be asked to restart the computer as the C: Windows partition can not be resized while Windows is active. Click the 'Restart Now' button.



13) During the reboot process and before Windows loads, Partition Wizard will process the changes you made to the 'System Reserved' and C: Windows partition. After Partition Wizard has completed the changes, your computer will boot to Windows.

