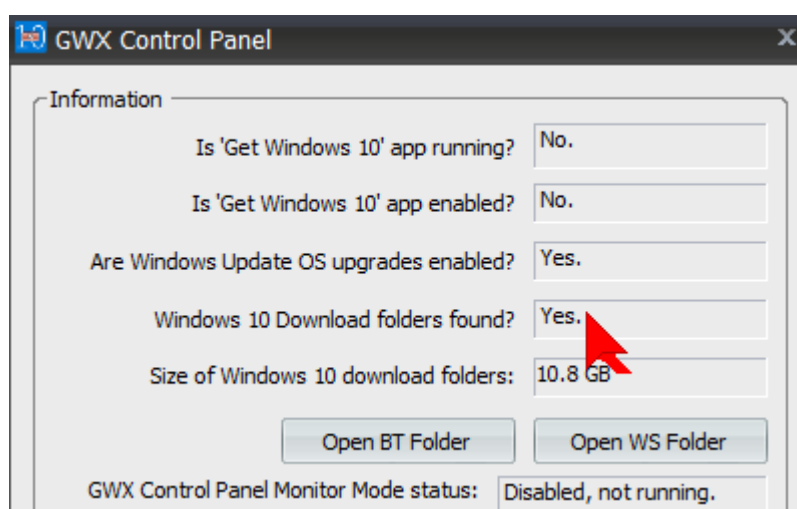




Windows 10 Stopper - GWX Control Panel -

Der "GWX Control Panel" ist ein simples, aber praktisches Tool. Die nervige Werbung unter Windows 7, Windows 8 sowie 8.1 für das kostenlose Upgrade lässt sich bequem mit einem Klick deaktivieren. Da man auch das Upgrade-Symbol manuell deaktivieren kann, ist dieses Tool vor allem für Windows-Laien gut geeignet.

Mit dem kostenlosen Tool "GWX Control Panel" blenden Sie unter Windows 7, Windows 8 sowie 8.1 das Windows-Upgrade-Symbol in der Taskleiste aus.



GWX Control Panel (GWX Stopper) Mit dem kostenlosen "GWX Control Panel" (ehemals "GWX Stopper") blenden Windows-User, die Ihr System noch nicht auf Windows 10 geupdated haben, das Windows-Upgrade-Symbol in der Taskleiste aus. Praktisch für alle Nutzer, die sich aktiv gegen ein Upgrade auf Windows 10 entscheiden und nicht weiter genervt werden wollen. Der User hat zudem die Möglichkeit, das Symbol kurzzeitig oder für immer zu deaktivieren.

GWX Control Panel - kostenloses Upgrade ausblenden

Microsoft versucht jeden Windows-User auf sein neues Betriebssystem [Windows 10](#) upzudaten, indem in der Taskleiste das Windows 10-Symbol nicht ausgeblendet wird. Doch nicht jeder will - aus diversen Gründen - das neue Update herunterladen. Der "GWX Control Panel" deaktiviert nach der Installation vollautomatisch das lästige Symbol im System-Tray.

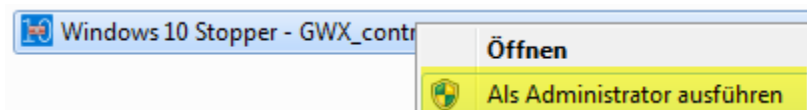
Wollen Sie das Symbol aus dem System-Tray manuell unterdrücken, so können Sie dies in unseren [Praxistipps](#) nachlesen.

Quelle: http://www.chip.de/downloads/GWX-Stopper-Windows-10-Update-Icon-deaktivieren_82717452.html

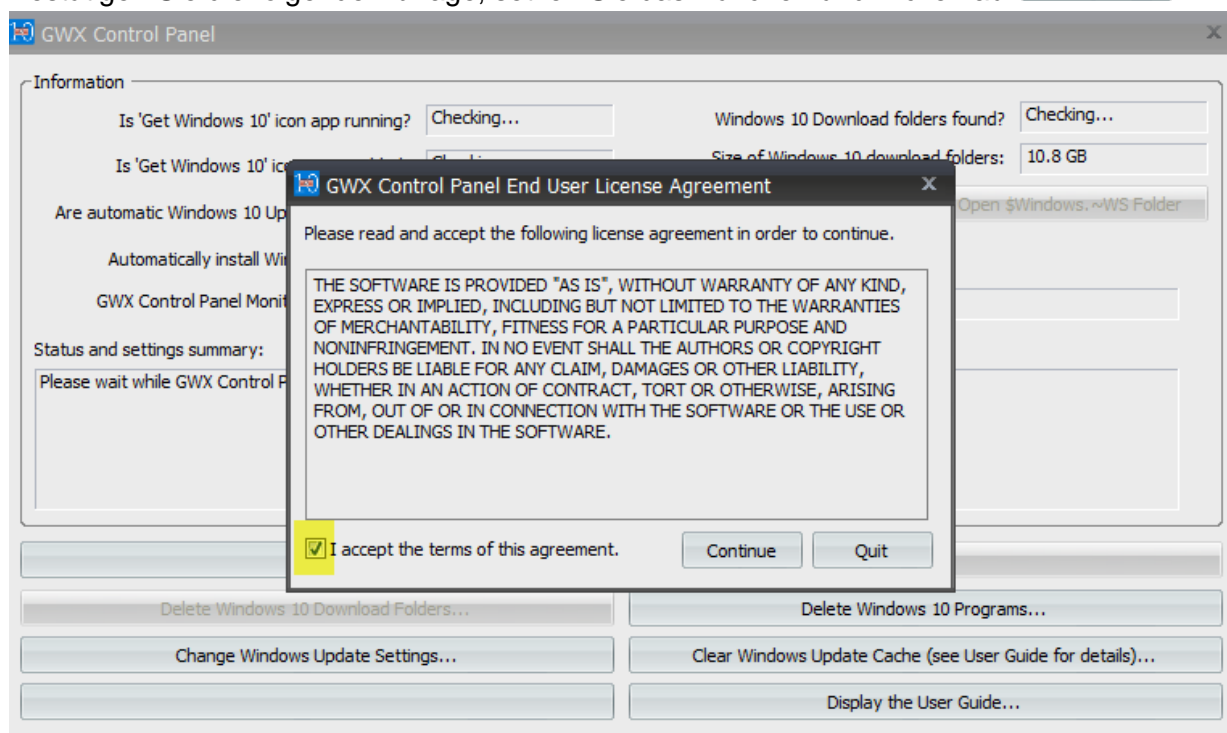


Gehen Sie so vor.

Starten Sie das Programm mit Rechtsklick darauf und dann mit Administrator-Rechten, so




Bestätigen Sie die folgende Abfrage, setzen Sie das Häkchen und klicken auf 



Nun erscheint die Programmoberfläche.

Klicken Sie nacheinander die Punkte 1 bis 3 an

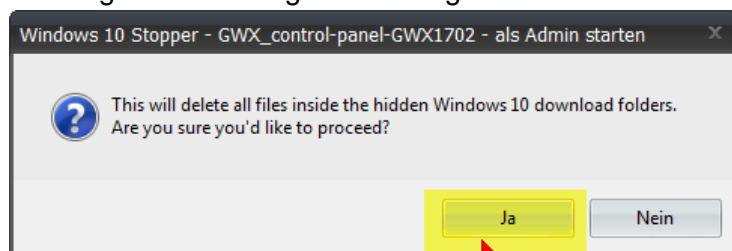


Durch 1 verschwindet das nervige Symbol  sofort

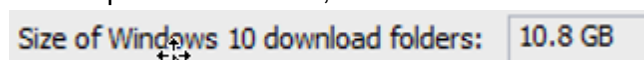
Mit 2 wird das Update aus dem Updatevorgang entfernt.

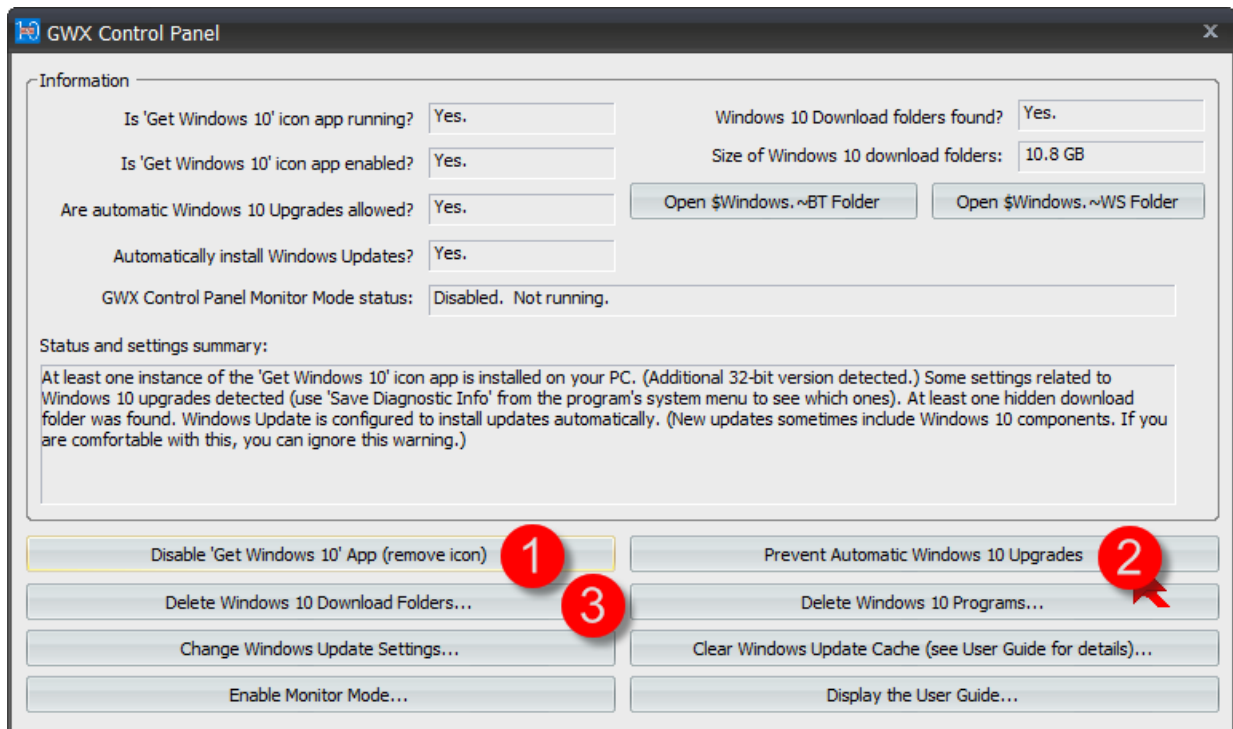
Durch 3 wird der bereits vorhandene Download-Ordner gelöscht.

Bestätigen Sie die folgende Abfrage mit Ja



Im Beispiel immerhin 10,8 GB Platzverbrauch!





Jetzt müssen Sie neu starten.

Ab jetzt ist Windows 10 Update geblockt.

Wenn Sie zu einem späteren Zeitpunkt Windows 10 doch wieder haben wollen, starten Sie das Programm noch einmal, und heben Sie die Blockade wieder auf

Klicken Sie dann auf

Enable 'Get Windows 10' App (restore icon)

und auf

Allow Automatic Windows 10 Upgrades

Damit ist die alte Funktionalität wieder hergestellt.



Hier noch die Originale Anleitung aus dem Internet, leider in Englisch

[Using GWX Control Panel \(formerly GWX Stopper\) to Permanently Remove the 'Get Windows 10' Icon](http://blog.ultimateoutsider.com/2015/08/using-gwx-stopper-to-permanently-remove.html)

<http://blog.ultimateoutsider.com/2015/08/using-gwx-stopper-to-permanently-remove.html>

Sunday, August 30, 2015

[Using GWX Control Panel to Permanently Remove the 'Get Windows 10' Icon](#)

GWX Control Panel is a free program that you can use to do the following on Windows 7 and Windows 8: Remove the "Get Windows 10" icon that appears in your notification area, prevent your Windows Update control panel from upgrading your computer to Windows 10, prevent your computer from secretly downloading Windows 10 installation files, detect and remove the hidden Windows 10 installation files if they're already on your PC, optionally monitor your computer for unwanted Windows 10-related settings and files- and beginning with version 1.7, you can now easily delete some hard-to-remove program files that are known to cause Windows 10 upgrades and annoyances.

GWX Control Panel really works, is safe and easy to use, and gives you the option to re-enable the icon and upgrade notifications if you're ever ready to move forward with Windows 10.



NEWS AND QUICK TIPS

Just some quick notes before we get to the documentation...



- **January 2, 2016:** The information in this post is now totally up-to-date with version 1.7.0.2 of GWX Control Panel ([download the program here](#)). The [troubleshooting guide](#) has also received significant updates.
- **December 30, 2015:** I just posted version 1.7.0.2 which fixes some issues reported in 1.7.0.1. (See the *GWX Control Panel Release Notes* section later in this post for a comprehensive list of new features, fixes, and enhancements.)
- **Tip:** Having problems with GWX Control Panel? [Check the troubleshooting guide](#).
- **Tip:** Do you have questions not answered below or in the troubleshooting guide? [Check the FAQ](#).
- **Tip:** You guys broke the Internet! This post has so many comments that my blog started putting them [on a separate page](#)! Look there if you posted a comment recently and are looking for a response.

Download GWX Control Panel

WHAT IT DOES AND HOW IT WORKS

The goal of GWX Control Panel is to protect you from unwanted Windows 10 upgrades and notifications without disabling important or popular operating system features, and without requiring you to change the way you work with Windows. Here are some specific ways GWX Control Panel helps you:

- The **Disable 'Get Windows 10' App** feature removes Microsoft's "Get Windows 10" nagware app from your notification area.

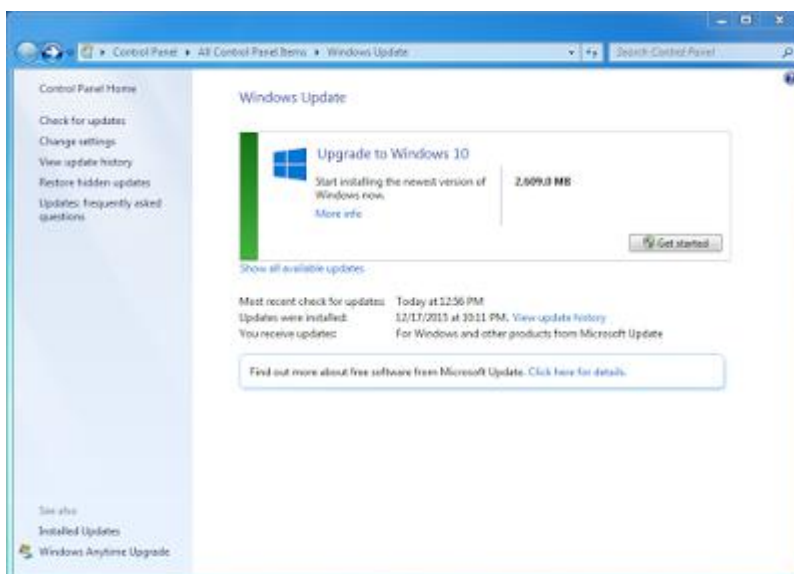


This is the 'Get Windows 10' icon app.

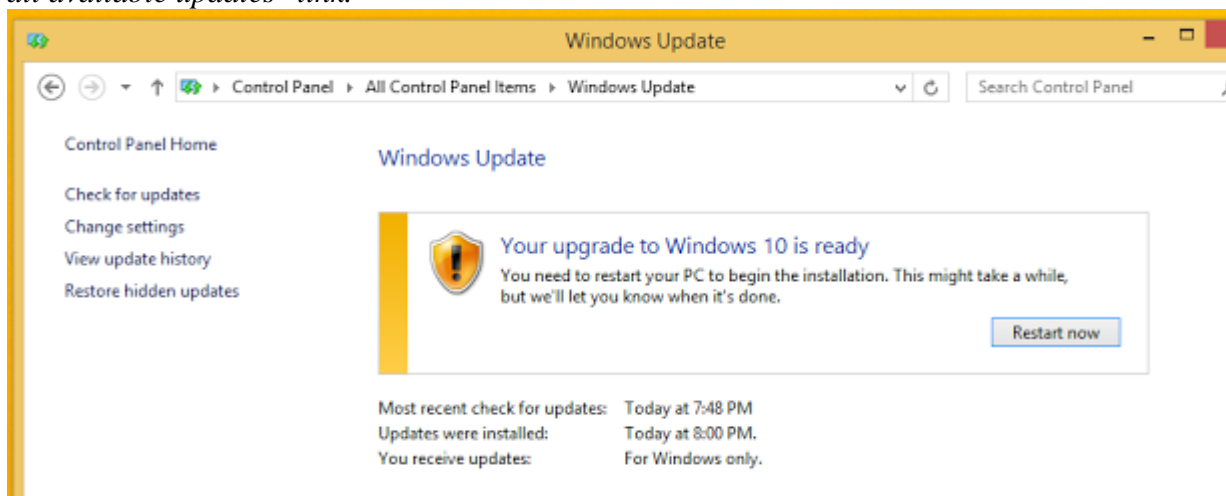
- The **Prevent Automatic Windows 10 Upgrades** feature checks for system settings that leave you vulnerable to unwanted Windows 10 upgrades and gives you the ability to fix them.



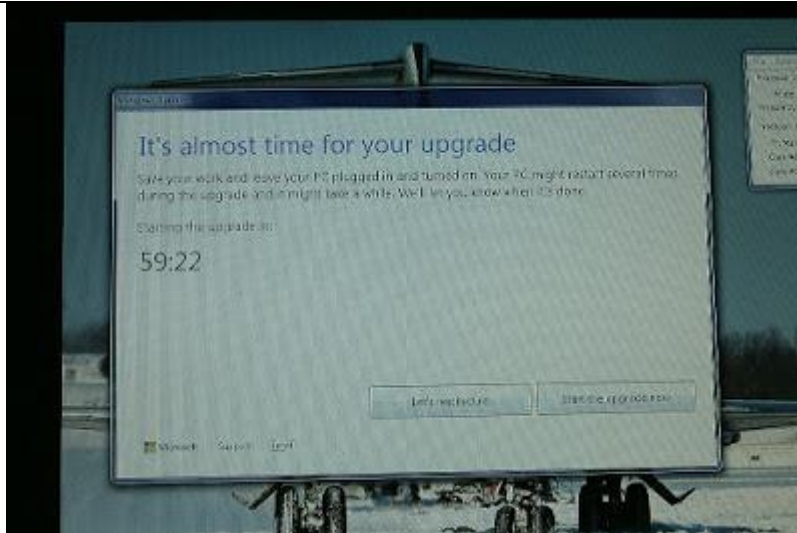
- The **Prevent Automatic Windows 10 Upgrades** feature also restores your Windows Update control panel to its normal behavior if it gets hijacked by Windows 10 advertisements or installers. Here are some specific symptoms it fixes:



This is one of numerous ways that Windows 10 can hijack your Windows Update control panel. In this example, Windows Update is hiding the normal Windows 7 updates behind the "Show all available updates" link.



*The **Prevent Automatic Windows 10 Upgrades** feature fixes the "Your upgrade to Windows 10 is ready" problem in Windows Update. (Note, some users will have to follow this with **Clear Windows Update Cache** in order to fully resolve this issue.)*



*The **Prevent Automatic Windows 10 Upgrades** feature can even rescue your PC from impending Windows 10 installs that display the "It's almost time for your upgrade" window.*

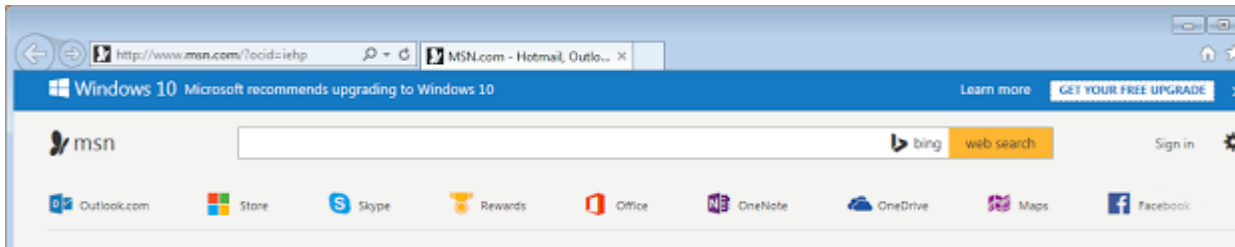
- The **Delete Windows 10 Download Folders** feature locates and deletes hidden Windows 10 installer files that Microsoft secretly downloads to your computer.
- The **Delete Windows 10 Programs** feature easily deletes hard-to-remove program files that are known to prepare your computer for Windows 10 upgrades.
- The program alerts you if your Windows Update settings change from one of the safer "download only" or "check only" options to "automatically install" behind your back and gives you the chance to fix it with the **Change Windows Update Settings** feature.
- The optional **Save Diagnostic Info** feature (in the right-click pop-up menu of the title bar) generates enhanced diagnostic reports that give you detailed information on any settings GWX Control Panel finds that leave you open to unwanted Windows 10 behavior.
- The optional "**Monitor Mode**" feature runs quietly in the background watching for unexpected system changes, and alerts you as soon as any new Windows 10 settings or files are detected.

What it doesn't do:

- Doesn't interfere with any Windows features such as Windows Update or OneDrive; the goal is to keep you safe from Windows 10 without having to change the way you work with your computer. (**Note:** You can optionally choose to disable automatic Windows updates with the **Change Windows Update Settings** feature if you prefer, but all update-related settings you can change in GWX Control Panel are safe and reversible.)
- Doesn't block or hide any specific Windows Update patches. (Although it can detect and optionally delete problematic Windows 10 files that Windows Update installs.)
- Doesn't include any advertising.
- Doesn't include any additional third-party software (you can even download it as a stand-alone executable).
- Doesn't collect any personal data or "phone home" in any way.
- Doesn't do any specific checking or disabling of Windows "telemetry" features, although this may appear as an optional capability in a future release.
- Doesn't (yet) prevent the Windows 10 advertisement that Microsoft displays in Internet Explorer. I am currently investigating whether there's a safe way to stop this. (But for



now I recommend just using a different browser like [Firefox](#) or [Chrome](#) if you don't want to see these ads.)



GWX Control Panel is not yet able to inhibit the "Microsoft recommends upgrading to Windows 10" banner ads in Internet Explorer, but this ability might appear in a future release.

•



This is another example of the annoying Internet Explorer "Microsoft recommends upgrading to Windows 10" ads that GWX Control Panel does not (yet) fix. Investigation on how to stop this behavior is ongoing.

DOWNLOADING AND INSTALLING GWX CONTROL PANEL

You can always [download](#) the latest version of GWX Control Panel at the [Ultimate Outsider Downloads page](#). The program is available for download either as an installer or as a standalone executable, but I recommend using the installer for the following reasons:

- The installer gives you some handy Start menu and desktop shortcuts for GWX Control Panel, documentation, and the uninstaller.
- The installer can provide a better experience for computers with multiple user profiles. (The program's Monitor Mode might not work properly for all users unless you run it from an appropriate location, and the installer takes care of this for you.)
- Using the installer allows for a more streamlined experience when updating to newer versions of GWX Control Panel, for a number of reasons.

The standalone version is still available for folks who want it, though.



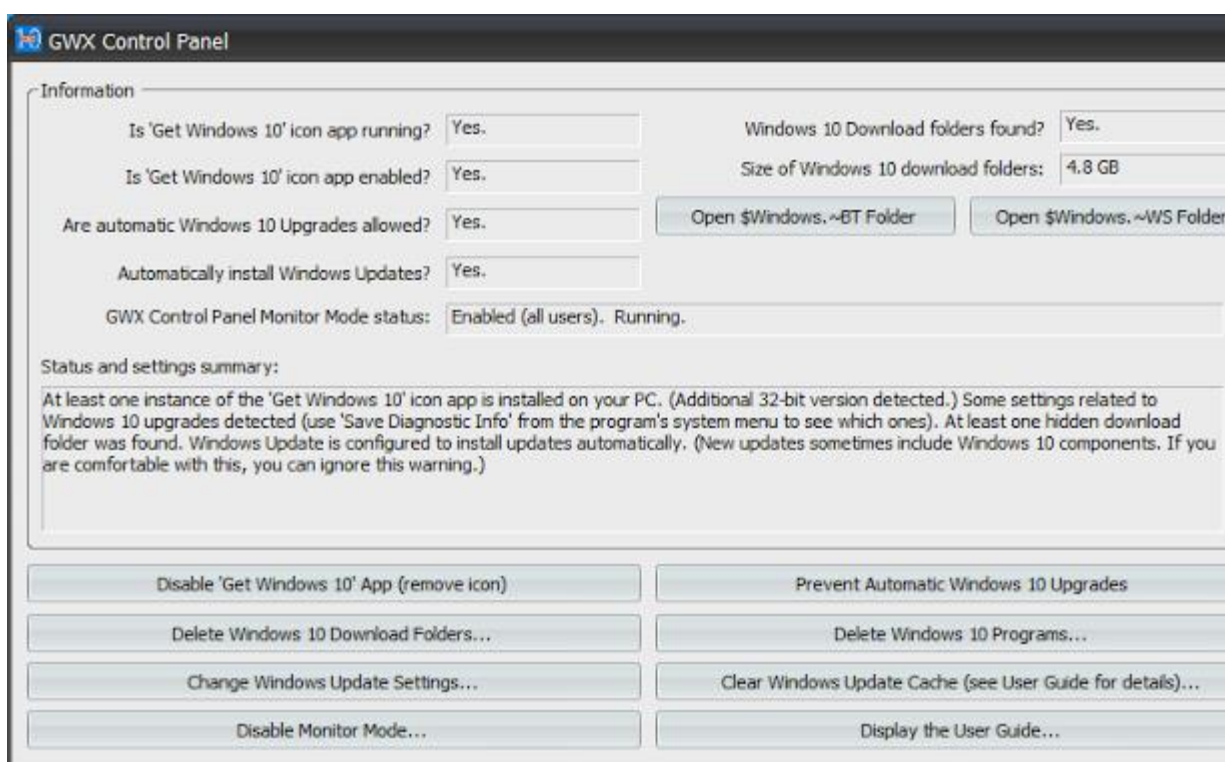
Download GWX Control Panel

Important

If you maintain a computer with multiple user profiles, please follow these simple tips to ensure the most streamlined and predictable installation and configuration experience:

- Use an administrator account when installing or uninstalling GWX Control Panel. (Standard and Child accounts actually run software installers using an administrator account's credentials, and this can result in a confusing experience for non-technical Windows users.) The [troubleshooting guide](#) has more information about how to use GWX Control Panel with Standard and Child user accounts.
- If your computer has multiple user profiles, log out of all profiles except your primary administrator user account before installing or uninstalling the program. The installer closes running instances of the program before upgrading or removing GWX Control Panel, but it cannot "see" instances of the process running under other user accounts. The fail-safe thing to handle this is to restart Windows, log in to an administrator account of your preference, then install, upgrade, or uninstall as desired.

When you launch GWX Control Panel, you'll see something like this:



The main GWX Control Panel window in version 1.7.

I posted a [quick video tutorial for GWX Control Panel 1.1](#) at YouTube. There's also [another tutorial](#) that covers the new features in versions 1.2 and 1.3. Many features have been added since those videos were produced, however.

THE INFORMATION SECTION



The upper portion of the main GWX Control Panel window is enclosed in a box labeled **Information**. This is where you can learn how protected your PC is from Windows 10 upgrades and notifications.

Here is a summary of the bits of information available here:

- **Is 'Get Windows 10' icon app running?** This indicates whether the Microsoft program that creates the "Get Windows 10" icon in your notification area is currently running. If the program doesn't exist on your computer, it will say, "**(App not found)**".
- **Is 'Get Windows 10' icon app enabled?** This indicates whether Microsoft's "Get Windows 10" is configured to run on your PC. It is possible for this field to say **Yes**, even if the first field says **No**, because Microsoft uses a series of scheduled tasks to determine when to run the program. If the program doesn't exist on your computer, it will say, "**(App not found)**".
- **Are automatic Windows 10 Upgrades allowed?** This field indicates whether your computer is vulnerable to unwanted Windows 10 upgrades and related side-effects that can appear in your Windows Update control panel. If this field says **Yes**, it means that one or more critical system settings are set in such a way that you might experience unexpected Windows 10 upgrades or other upgrade-related behaviors in certain parts of the operating system (such as messages in the Windows Update control panel encouraging you to upgrade to Windows 10). If you would like to know exactly which settings GWX Control Panel discovered, you can find this information in the output file generated by the **Save diagnostic info** command in the program's system menu. (See "*The System Menu*" section for more info.)
- **Automatically install Windows Updates?** If this field says **Yes**, it means that you currently have Windows Update configured to automatically install new updates on a regular schedule. This is not recommended if you truly wish to avoid Windows 10, since Microsoft routinely pushes new Windows 10-related updates, and you could easily get an unpleasant surprise by installing all new updates without reviewing them first. This field is new in version 1.7, in response to a number of reports I've heard from Windows users who claimed their Windows Update preferences changed from "download only" or "check only" to "automatically install" without their consent. GWX Control Panel checks for this now so you can catch any unexpected changes.
- **Windows 10 Download folders found?** Microsoft pushes the Windows 10 installer files into secret, hidden directories on unsuspecting users' computers through a couple of different methods. This field indicates whether GWX Control Panel detects one or more of the locations where these files are known to reside.
- **Size of Windows 10 download folders:** If one or more of the hidden download folders are found, this field indicates the total amount of storage space occupied by the files they contain.
- **Open BT Folder:** When the hidden \$Windows.~BT download folder is found, you can click this button to open the folder in Windows File Explorer.
- **Open WS Folder:** When the hidden \$Windows.~WS download folder is found, you can click this button to open the folder in Windows File Explorer. This folder is less common, and is usually the result of running Microsoft's Windows 10 Media Creation Tool.
- **GWX Control Panel Monitor Mode Status:** This indicates whether you have enabled the Monitor Mode feature of GWX Control Panel, and also whether a Monitor Mode instance of the program is currently running. Depending on how you've set up your computer, you might have monitor mode enabled for a specific user account or for all



users on the PC, and that is reflected in this field as well. (Please see the section on Monitor Mode for more information.)

- **Status and settings summary.** Most of the time, this little box gives you a quick summary of your PC's current status as far as Windows 10 files and settings go. This box can also display the current status of operations that take some time to complete.

THE BUTTONS

The lower portion of the main GWX Control Panel window contains a number of buttons for configuring and troubleshooting your PC. This is what they do:

- **Enable/Disable 'Get Windows 10' App:** This enables or disables Microsoft's Get Windows 10 icon app, either removing or restoring the icon in your notification area, as desired. This button is only available if GWX Control Panel detects the app on your PC.
- **Prevent/Allow Automatic Windows 10 Upgrades:** This changes a number of settings that determine whether Microsoft is able to upgrade your PC to Windows 10 or change the behavior of your Windows Update control panel to deliver Windows 10 advertisements and updates. This does NOT disable Windows Update and does not block or hide any Windows Update patches.
- **Delete Windows 10 Download Folders:** If any of the hidden Windows 10 installer folders are detected on your computer, you can use this button to delete those files and free up storage space. This button is not available if no download folders are detected. Note that this procedure can take some time (once it starts actually deleting files, you should see the "Size of Windows 10 download folders" field report gradually decreasing sizes. If you have trouble deleting all of the files, you can use the "Save diagnostic info" option in the program's system menu to see if there were any telling error messages.
- **Change Windows Update Settings:** This new button in version 1.7 opens a dialog box where you can change how Windows update behaves. These are some of the same options available in the "Change settings" screen of the Windows Update control panel. For the best balance of security and protection from Windows 10, it's recommended that you choose one of the options that lets you choose which updates you wish to install, rather than installing all updates automatically or disabling updates entirely.
- **Clear Windows Update Cache:** While not directly related to Windows 10, this step is sometimes necessary to remove some lingering Windows 10 notifications from your Windows Update control panel after using the "Prevent Automatic Windows 10 Upgrades" feature. While this feature isn't harmful, it really isn't necessary in most cases, and it does result in some one-time changes in Windows Update that some users might find annoying. GWX Control Panel lists all known one-time effects when you choose this option and gives you a chance to decide whether to proceed before clearing your update cache.
- **Enable/Disable Monitor Mode:** Use this button to manage the Monitor Mode feature of GWX Control Panel. Monitor Mode places an icon in your notification area that alerts you if it detects any changes to your PC that might leave you vulnerable to Windows 10. Please see the "Using Monitor Mode" section below for more info.

Note: This button configures Monitor Mode for all user profiles on the PC. If you'd like to manage Monitor Mode for just a single user profile, you can use the **Enable/disable**

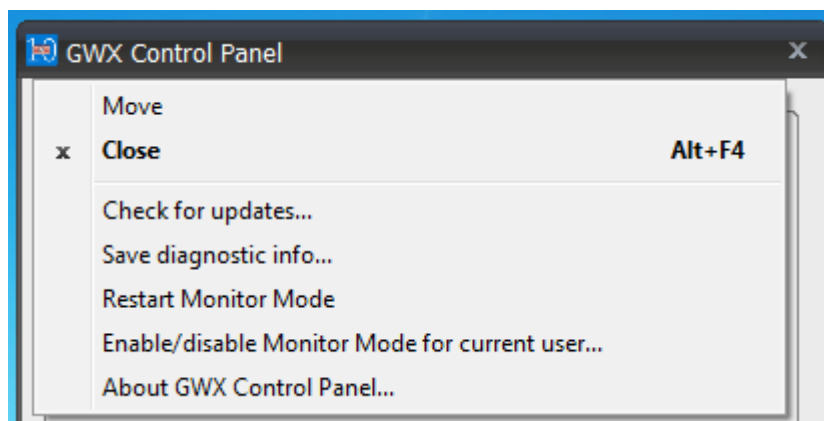


Monitor Mode for current user command on the system menu.

- **Display the User Guide:** This launches your default browser to the GWX Control Panel user guide.

THE SYSTEM MENU

If you click the icon in the upper-left of the main GWX Control Panel window, you will see the system menu:



The version 1.7 system menu.

- **Check for updates:** This opens a dialog box that displays the version of GWX Control Panel you're currently running and links you to the [Ultimate Outsider Downloads page](#) to see if a newer version is available.
- **Save diagnostic info:** This saves a file called GwxControlPanelLog.txt to your desktop that contains relevant information about your computer and your Windows 10-related settings and files. Beginning with version 1.7 this report explains exactly what system settings it detected on your PC, which will help you understand what's going on behind the scenes when Monitor Mode detects new changes, for example.
- **Restart Monitor Mode:** You can use this to launch a Monitor Mode instance if you have Monitor Mode enabled, but it's not currently running.
- **Enable/disable Monitor Mode for current user:** Use this to manage monitor mode configuration for a specific user account on the computer. This replicates the behavior of the Enable/Disable Monitor Mode button from version 1.6 whereas in 1.7 that button now manages the feature for all user accounts on the computer.
- **About GWX Control Panel:** Just displays a dialog box with the current version and author information.

USING MONITOR MODE

When you enable GWX Control Panel's optional Monitor Mode, a new icon will appear in your notification area that will alert you if GWX Control Panel detects any unexpected files or settings that leave you vulnerable to Windows 10. Once enabled, GWX Control Panel will start and quietly monitor your computer whenever you log in to Windows.



Enabling/Disabling Monitor Mode for all users (recommended):

If your computer has multiple user profiles- and especially if some of those profiles are Standard or Child accounts- the best way to use Monitor Mode is to enable it for all users. To do this, just click the **Enable Monitor Mode** button in the main GWX Control Panel window. The notification icon will appear in the currently logged-on session of Windows, and will also appear for other user accounts who later sign in to Windows.

To disable Monitor Mode, just click the **Disable Monitor Mode** button. If you do this from a Standard or Child user account, you will have to enter the password of an administrator user account in order to proceed. Please see the [troubleshooting guide](#) for more information about the limitations of Standard and Child user accounts.

Note

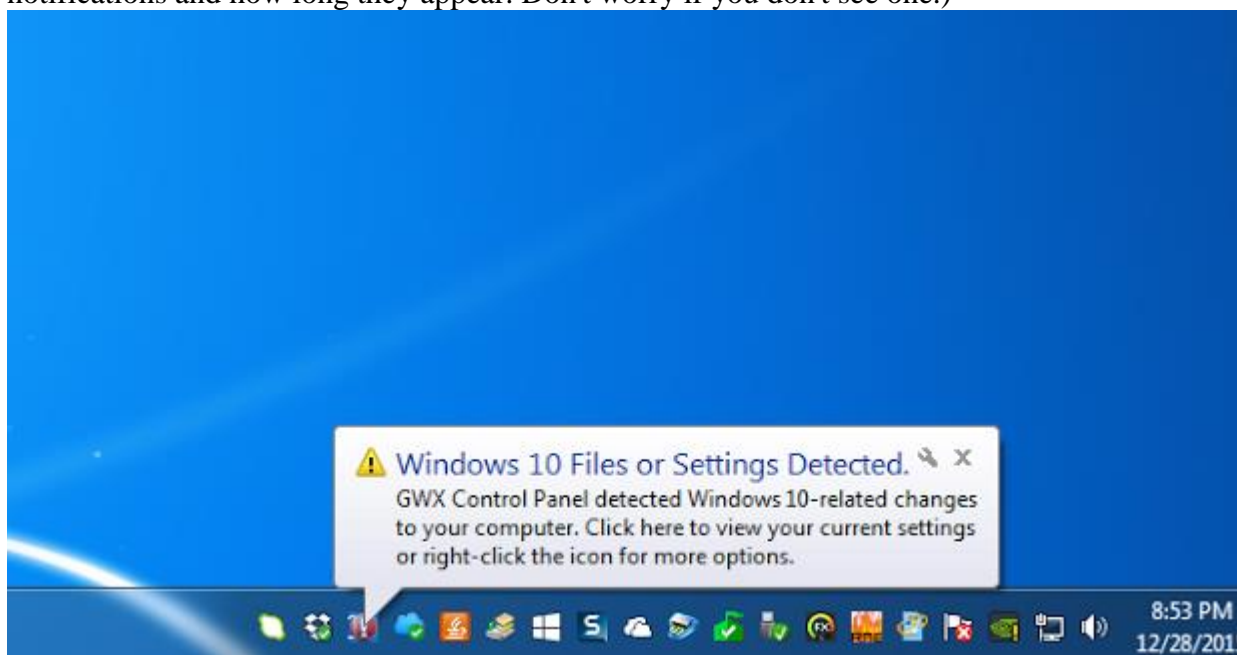
Version 1.6 of GWX Control Panel only enabled Monitor Mode on a per-user basis, which resulted in some confusing behavior for users running on Standard or Child accounts. As a result, if you upgrade from version 1.6 to 1.7 of GWX Control Panel, you might find that Monitor Mode is enabled for both the current user and for all users. While this is harmless (only one Monitor Mode instance ever runs per-user at a time), you can fix it by disabling Monitor Mode for the current user. (See below.)

Enabling/disabling Monitor Mode for a single user:

If you'd prefer to only have the Monitor Mode icon active on a per-user basis, or if you'd like to disable the single-user Monitor Mode from a previous version of GWX Control Panel, just choose the **Enable/disable Monitor Mode for current user** option in the program's system menu (accessible by clicking the icon in the upper-left corner of the program window).

Responding to Monitor Mode alerts:

When Monitor Mode detects a Windows 10-related change to your computer, its notification icon flashes with an exclamation mark, and a balloon notification normally appears to draw your attention. (The operating system decides whether or not you see these balloon notifications and how long they appear. Don't worry if you don't see one.)



The Monitor Mode balloon notification.



To see what specific settings or files were detected, open up the main GWX Control Panel window. You can do this in several ways:

- Click the balloon notification.
- Double-click the Monitor Mode icon in your notification area.
- Right-click the Monitor Mode icon and then click Display GWX Control Panel from the shortcut menu.

Any of the above three actions also stops the notification icon from flashing.

Once you have a visible instance of GWX Control Panel open, check the various fields in the program's Information section to see what files or settings may have triggered the alert. If you'd like a more detailed report, you can use the **Save diagnostic info** option from the shortcut menus of either the Monitor Mode icon or the main GWX Control Panel window.

When alerts are triggered:

Monitor Mode keeps track of which Windows 10 settings or files it discovered, and if you choose not to remedy a specific new finding, it will not alert you again until something else changes. This alerting is done on a per-user basis. Consider this scenario:

1. User A receives a Monitor Mode alert because some Windows 10 files were detected on the computer. The user dismisses the alert but decides not to do anything about it.
2. User B logs in to Windows and also receives the alert, but likewise doesn't do anything to fix the problem.
3. When user A logs back into Windows, Monitor Mode does not alert that user about the same problem again.

Keep this in mind if you receive a Monitor Mode alert about something you don't care about. For example, if you are aware of the risks of leaving your Windows Update set to "Install updates automatically" and wish to leave it that way, just dismiss the Monitor Mode alert and forget about it. You won't be bothered again unless someone changes your Windows Update settings to something else and then changes it back to "install automatically."

The Monitor Mode pop-up menu:

If you right-click the Monitor Mode icon, you'll see this pop-up menu:



Several of the menu options are also available from the system menu of the main GWX Control Panel window, but some are unique to Monitor Mode:



- **Display GWX Control Panel:** Opens a visible instance of GWX Control Panel if one isn't already opened. Also dismisses any alerts if the Monitor Mode icon is currently flashing.
- **Reset Control Panel Window Position:** If you ever find the main GWX Control Panel window in a strange location such that it is not visible or cannot be moved due to the title bar being out of reach, this option re-centers the program in the middle of your main display.
- **Check for updates:** This opens a dialog box that displays the version of GWX Control Panel you're currently running and links you to the [Ultimate Outsider Downloads page](#) to see if a newer version is available.
- **Save diagnostic info:** This saves a file called GwxControlPanelLog.txt to your desktop that contains relevant information about your computer and your Windows 10-related settings and files. Beginning with version 1.7 this report explains exactly what system settings it detected on your PC, which will help you understand what's going on behind the scenes when Monitor Mode detects new changes, for example.

Note

Doing **Save diagnostic info** from Monitor Mode does not include any potential error messages that might occur when attempting to delete Windows 10 download files. Please use the option from the main GWX Control Panel instance if trying to troubleshoot file delete problems.

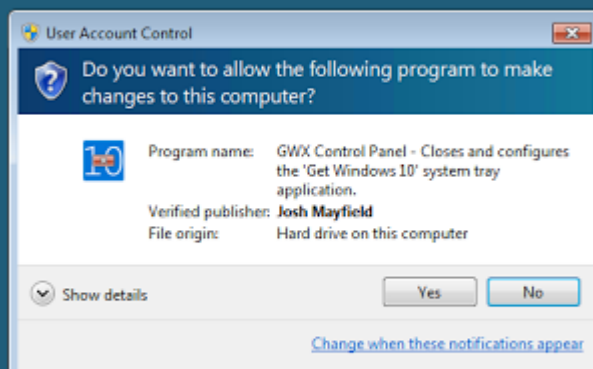
- **About GWX Control Panel:** Just displays a dialog box with the current version and author information.

WORKING WITH STANDARD AND CHILD USER ACCOUNTS

If you have multiple user accounts set up on your Windows PC and some of them are Standard or Child accounts, there are some important things you should know about how GWX Control Panel works when running under these limited account types.

Under normal circumstances (when launching GWX Control Panel from one of the desktop or Start menu shortcuts, or when it loads in Monitor Mode), GWX Control Panel behaves the same for all Windows user account types: It doesn't need administrator permissions when it's just checking your current settings (Monitor Mode *never* needs administrator permissions). Things get a little more complicated once you attempt to use GWX Control Panel for a system-level change that requires administrator permissions.

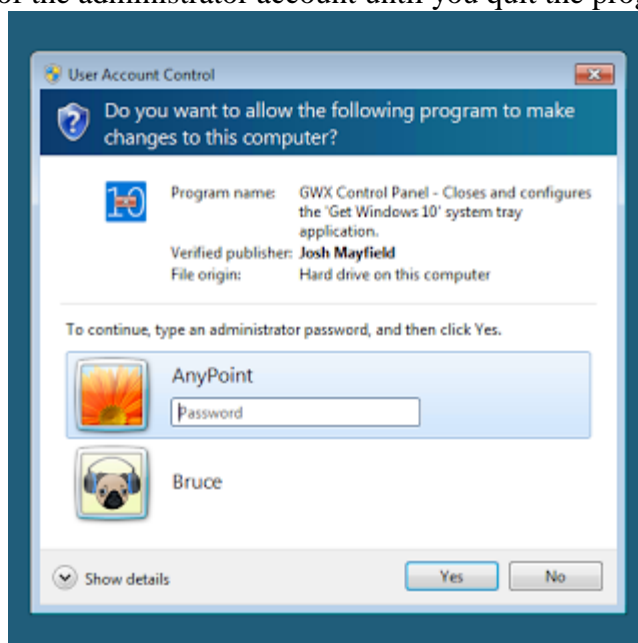
If you are using an administrator account and User Account Control (UAC) is enabled, Windows will ask if you want to grant GWX Control Panel permission to make settings to your computer the first time you attempt to perform an action that requires administrator permissions:



The User Account Control prompt when an administrator account attempts a system change in GWX Control Panel.

If you are using an administrator account and User Account Control is disabled, GWX Control Panel will silently grant itself administrator permissions and perform the action you requested.

If you are using a Standard or Child account and try to use a GWX Control Panel feature that requires administrator access, Windows prompts you to enter the password of an administrator account. **Important:** After you enter the password, GWX Control Panel runs under the user profile of the administrator account until you quit the program!



Windows requires an administrator password if a Standard or Child account tries to make any system-level changes.

In all three of the above cases, *GWX Control Panel continues running at elevated permissions*



until you quit the program. For Standard and Child account users, this can have some confusing side-effects!

- User-specific settings, like **Enable/disable Monitor Mode for current user**, will happen under the administrator user's account.
- The **Display the User Guide** feature launches the administrator account's default browser with that account's browser settings, bookmarks, etc.
- The **Save Diagnostic Info** report will say "User is Administrator=Yes" because Windows is running it under the account of an administrator.

The GwxControlPanelSetup installer requires administrator permissions in order to install/upgrade/uninstall GWX Control Panel. If a Standard or Child account uses the the installer and then checks the option to launch GWX Control Panel in the final page of the setup wizard, *that instance of GWX Control Panel inherits the permissions of the installer; it runs under the administrator's account*. This is why I recommend that you only run the installer/uninstaller from an administrator account.

Please see [the troubleshooting guide](#) for some more information on weird things that Standard/Child user accounts can experience.

ABOUT THE 'CLEAR WINDOWS UPDATE CACHE' FEATURE

*You should only use the **Clear Windows Update Cache** feature if the **Prevent Automatic Windows 10 Upgrades** feature (followed by a system restart) didn't fix the Windows 10-related problems you were having. While my own testing (and some public beta testing) has shown this procedure to be safe, it has the following immediate effects:*

1. *The first time you view the Windows Update screen, it will look as if you had never previously run an update.*
2. *The first time you check for new updates, it will take longer than normal, since Windows has to download some additional one-time information.*
3. *The "view update history" list will be empty, and only new updates you install from this point on will appear on it.*

Note: *Your list of actual "installed updates" will **not** be empty, and previously installed updates can still be uninstalled.*

4. *Any updates you had previously hidden with the "Hide update" feature of Windows Update will have to be re-hidden if you no longer wish for them to appear in your lists of available updates.*

While all of these effects are only temporary, they also cannot be undone. Beginning with version 1.5, the program lists the above one-time effects and gives you a chance to cancel or proceed. I go into my usual excessive detail below...

The **Prevent Automatic Windows 10 Upgrades** feature puts the correct settings in place to keep your control panel from being hijacked by the Windows 10 Upgrade, and that alone



(followed by a Windows restart) should be enough for most people. Sometimes, however, the Windows Update subsystem needs to be refreshed in order to display the correct updates, so that's what **Clear Windows Update Cache** is for.

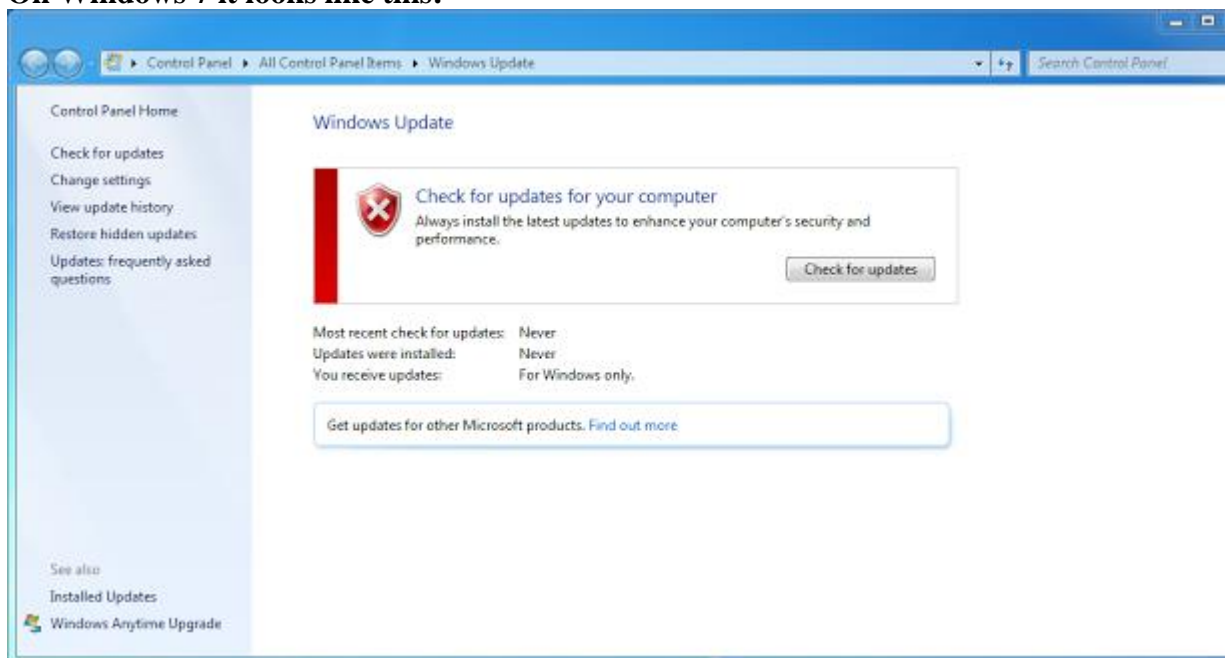
When you click the button, GWX Control Panel checks to see if you currently have any "pending updates" waiting for a system restart in order to complete, and it will ask if you're sure you'd like to proceed.

- If you haven't restarted Windows in a while, you should probably click **No** when you see this message. GWX Control Panel will then ask if you'd like to restart Windows to let the pending updates complete installation.
- If you just restarted Windows after using the **Prevent Automatic Windows 10 Upgrades** feature and you still get this message, this warning is probably a false alarm resulting from some mismatched files in your Windows Update cache. You can safely click **Yes** to proceed.
- Likewise if you just restarted Windows in response to GWX Control Panel indicating that you had pending updates and you're still seeing this message, it is likely a false alarm and you can safely click **Yes**.

Clearing the update cache only takes a few seconds. Upon completion, the information area reports "Operation complete" and indicates how many cache files were deleted.

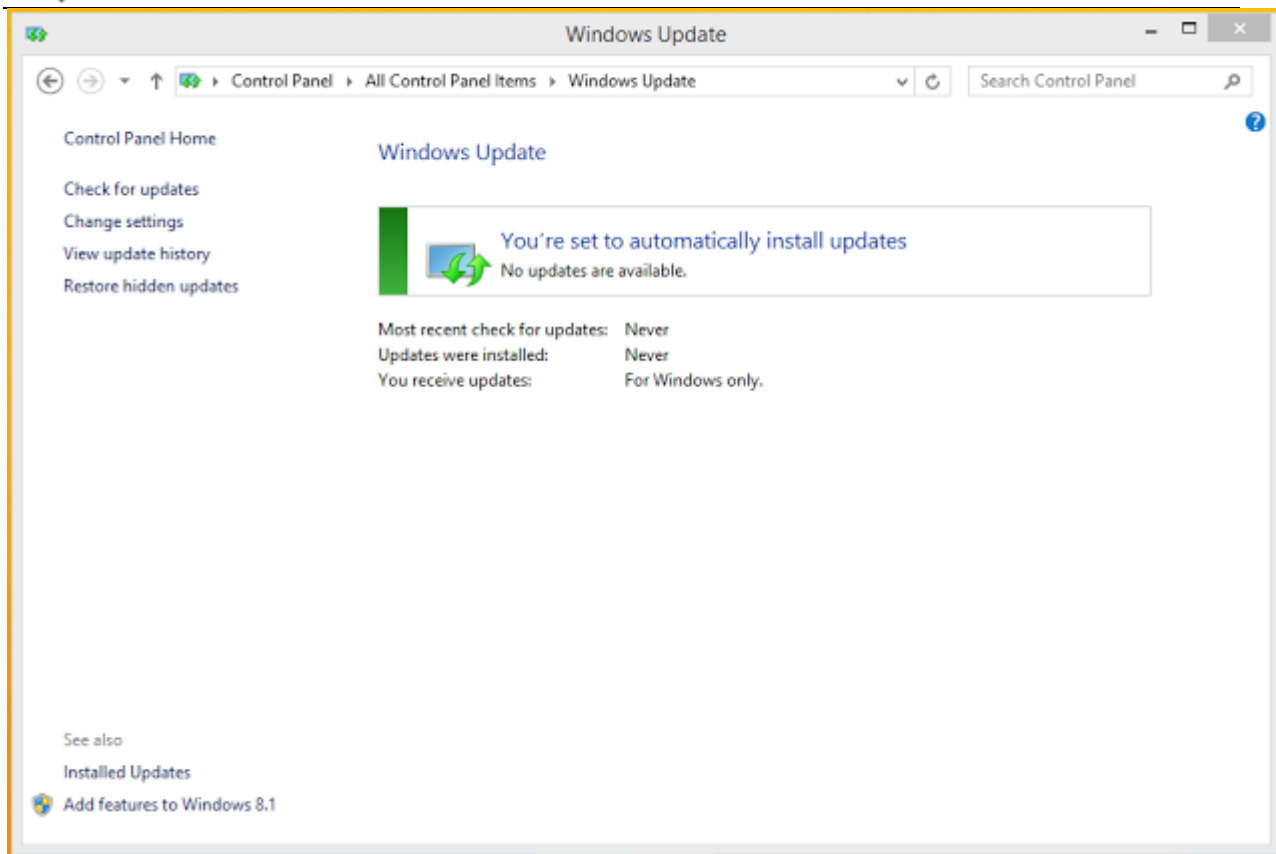
The next time you open the Windows Update control panel, you'll find that it behaves as if it's being displayed for the very first time.

On Windows 7 it looks like this:



Don't be alarmed by the red X!

On Windows 8 it looks like this:



The first time you click **Check for updates**, it will take Windows longer than usual to download information on available updates. This is to be expected, and only happens the first time you check for updates after clearing your cache.

You may want to take a look at the specific updates available to you, because clearing the cache also clears out any record of updates you have explicitly hidden in the past. If you want certain updates to remain hidden, look for them under your important and optional updates and re-hide them. (Thanks to commenter Jim for the reminder!)

Note: If you experience errors in Windows Update after clearing your cache, these are usually intermittent server-side Windows Update errors that aren't related to GWX Control Panel. Please see the "i used gwxcntrl panel and now i get errors when i try to check for windows updates" section of the [troubleshooting guide](#) for more info.

GWX CONTROL PANEL RELEASE NOTES

Here are the differences between all released versions of GWX Control Panel:

VERSION 1.7.0.2

Date: December 30, 2015

Installer MD5 checksum: 0E2FB32DC43F3C210E13A156B3CB385C

Installer SHA-1 checksum: 4958C9FFBC692CE657EB89484FD54F2E40A02D98

Stand-alone MD5 checksum: 338E4AD4E15C34C9D12023CE709E7131



Stand-alone SHA-1 checksum: 25BF97EE01A44963B4C2029FB98D64997C0BF53B

Changes:

- New "**Delete Windows 10 Programs**" feature deletes program files known to be related to the Windows 10 upgrade and their related scheduled tasks. Right now this only covers files from the KB3035583 patch, but future versions will include other files as more problematic programs are discovered. **Important:** These programs are the main reason people were seeing their Windows 10 Upgrades settings getting reset in the 1.6 version of GWX Control Panel monitor mode. This new feature is the best way to prevent those reversions; simply removing the Get Windows 10 icon from your notification area is not enough to stop Microsoft from continually reverting your settings.
- Now detects whether Windows Update is configured to automatically install updates (the "**automatically install Windows Updates**" field in the information section), because automatically installing new updates leaves you vulnerable to Windows 10 upgrades. Beginning with version 1.7.0.2, Monitor Mode will only trigger an alert if it detects that Windows Update switches from one of the safer settings to "automatically install." It won't trigger an alert if you already had Windows Update configured for automatic updates.
- (Version 1.7.0.2) New, more horizontal window layout makes it possible for users running Windows at extremely low screen resolutions to see all GWX Control Panel controls.
- Added new "**Change Windows Update Settings**" feature where you can set your Windows Update preferences in the event that GWX Control Panel detects that you are in automatically install mode.
- Slightly reduced CPU and resource utilization (it was already pretty good before, but now it's even better).
- Renamed "**Disable OS Upgrades in Windows Update**" feature to "**Prevent Automatic Windows 10 Upgrades**" because the old name confused some users.
- Improved responsiveness and reliability of "**Prevent Automatic Windows 10 Upgrades**" feature.
- Now additionally detects 32-bit version of MS "Get Windows 10" app on 64-bit Windows.
- Tightened up Windows 10 detection logic; no longer triggers alerts in one case that's been determined to be safe. Added at least one new detection scenario.
- **Save Diagnostic Info** report now includes human-readable details on exactly what traces of Windows 10 were found. Indicates parent subkey and registry value of detected (or missing) settings.
- Some other additional details in diagnostic info, like whether current user is administrator and running status of some critical services.
- No longer prompts for restarts after **Prevent/Allow Automatic Windows 10 Upgrades**. (The improved reliability of the new logic should make restarts unnecessary.)
- **Enable/Disable Monitor Mode** feature now defaults to enabling Monitor Mode for all users instead of just the current user account. Per-user enable/disable is still available from a system menu option (see [version 1.7 user guide](#) for details). This new behavior is due to the very confusing way that Windows handles program credentials when users with Standard and Child accounts have to elevate to admin privileges when performing certain actions. The [troubleshooting guide](#) should include some background on this as well.



- End User License Agreement now appears as a child of the main program dialog, preventing the situation where it appears behind other open windows but users have no idea since the old EULA dialog didn't have an icon in the taskbar.
- **Installer:** Added shortcut to GWX Control Panel uninstaller in the GWX Control Panel folder of the Start menu.
- **Installer:** Start menu and desktop shortcuts are now created for all users on the computer instead of just the profile of the user who installed it.
- **Installer:** Added more logic to kill existing GWX CP processes during install/uninstall. NOTE: This doesn't work across multiple currently logged-in user accounts. Please log out all other user accounts before installing/uninstalling to ensure the program files can safely be installed/removed. Also, ideally you should run the installer from an administrator account, not an elevated Standard or Child account.

Issues fixed in version 1.7.0.2:

- If you used GWX Control Panel's Monitor Mode and you use the installer to upgrade from an earlier version of the program, the installer didn't automatically restart Monitor Mode after the upgrade is complete. The installer now restores Monitor Mode if you had it enabled previously. GWX Control Panel will also now start Monitor Mode if it detects that you have it enabled but for some reason it isn't running.
- The new buttons and information fields in version 1.7.0.1 made the program too tall to fit on very low resolution screens. The minimum screen size I tested with internally was 1360x768, but many netbooks have 800x600 screens, which can't display the whole GWX Control Panel program window. Version 1.7.0.2 has been re-arranged so that it doesn't take up so much vertical space.
- If you already had your Windows Update settings configured to "automatically install updates" this would trigger an alert in Monitor Mode the first time it ran, even if you WANT to have Windows Updates at that setting. The real purpose of this alert is to let you know if Microsoft *changes* your Windows Update settings without your consent. Version 1.7.0.2 will now only trigger an alert if it detects that Windows Update changed from one of the other three options to "automatically install," which might indicate that a Windows Update patch reverted your Windows Update preferences.

Quelle: <http://blog.ultimateoutsider.com/2015/08/using-gwx-stopper-to-permanently-remove.html>