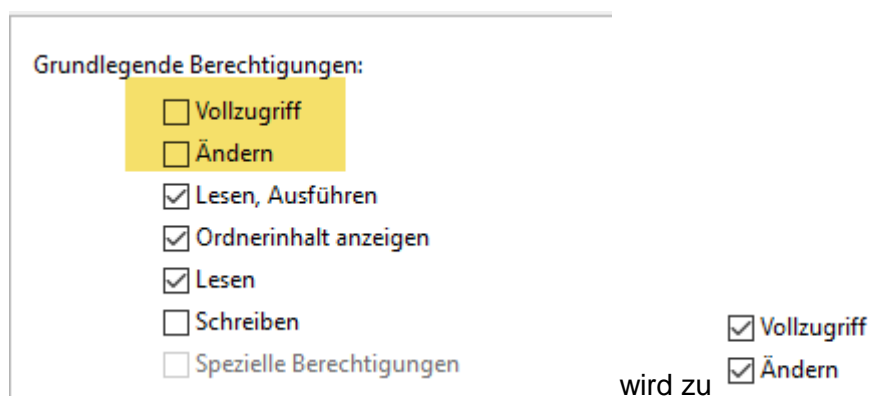
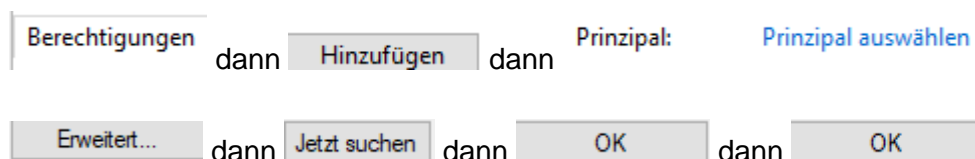
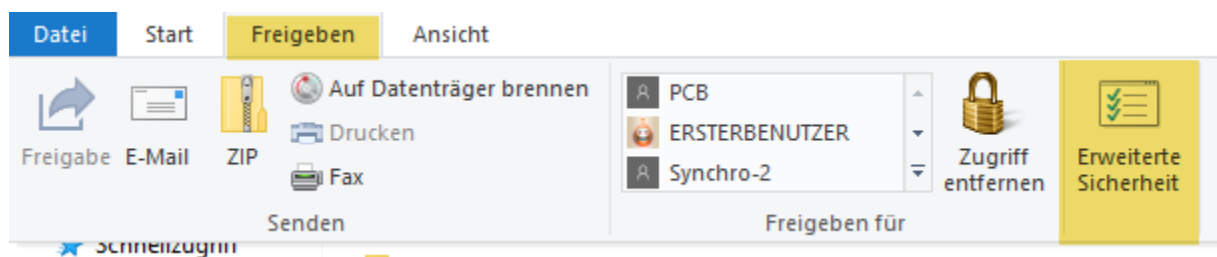




Anleitung Windows 10 Netzwerk einrichten



Quelle: <https://www.youtube.com/watch?v=-lmzsX1qNYE>



Solve Network Scan to Folder not working

By [Derick Payne](#) | October 24, 2018

[1 Comment](#)

If you face scan to folder or network scanning issues, this article can help you solve it. I face scan to folder issues regularly and I know from experience that a solution is hard to find. A client and good friend of mine was fighting a malfunctioning network scanner for over a year. Furthermore, they were told that replacing the multi-function printer/scanner is the only solution.

Unfortunately, replacing the printer would not have magically fixed their scanning woes. Even though the issue was clearly software based, the printer technician simply did not know how to fix it and in their mind, the hardware must be faulty.

After a few days of Googling, phoning and sending smoke signals, I found a solution. Now, I want to share that solution with you. In this article, I will not show you how to setup scan to folder nor how to configure your network scanner. Nevertheless, you will learn the necessary troubleshooting steps to solve this conundrum.

What changed?

When troubleshooting software issues, the first thing you must do first is – determine what changes were made to the system when the issue started. For example, look for software updates or additions, hardware replacements, or configuration changes.

In my client's case, they upgraded to Windows 10, the same time their network scanning troubles started. You should have a light-bulb moment now. Correct – Windows 10 broke the scan to folder function. But what exactly went wrong?

Can you browse the network and access the share?

Essentially, scan to folder uses a shared folder to scan to. There is normally a scan user account with permission to access a scan folder over the network. The scan folder is shared like any other shared folder and the scan user account is normally set up with administrator privileges. So, check if the scan folder is accessible from another computer on the network.

If you are unable to browse the network, read the, [Fix Network Computers Not Visible in File Explorer](#) article and make sure you can see the computer first. Now, browse to the shared scan folder, and see if you can access it, either with the scan user account credentials, or without when shared with **Everyone**.

If you do not see the shared scan folder, there could be a problem with the share. If you cannot access it, there could be something wrong with the scan account or password protected sharing is turned on. Because I assume that you are experiencing scan to folder issues on a Windows 10 machine, the

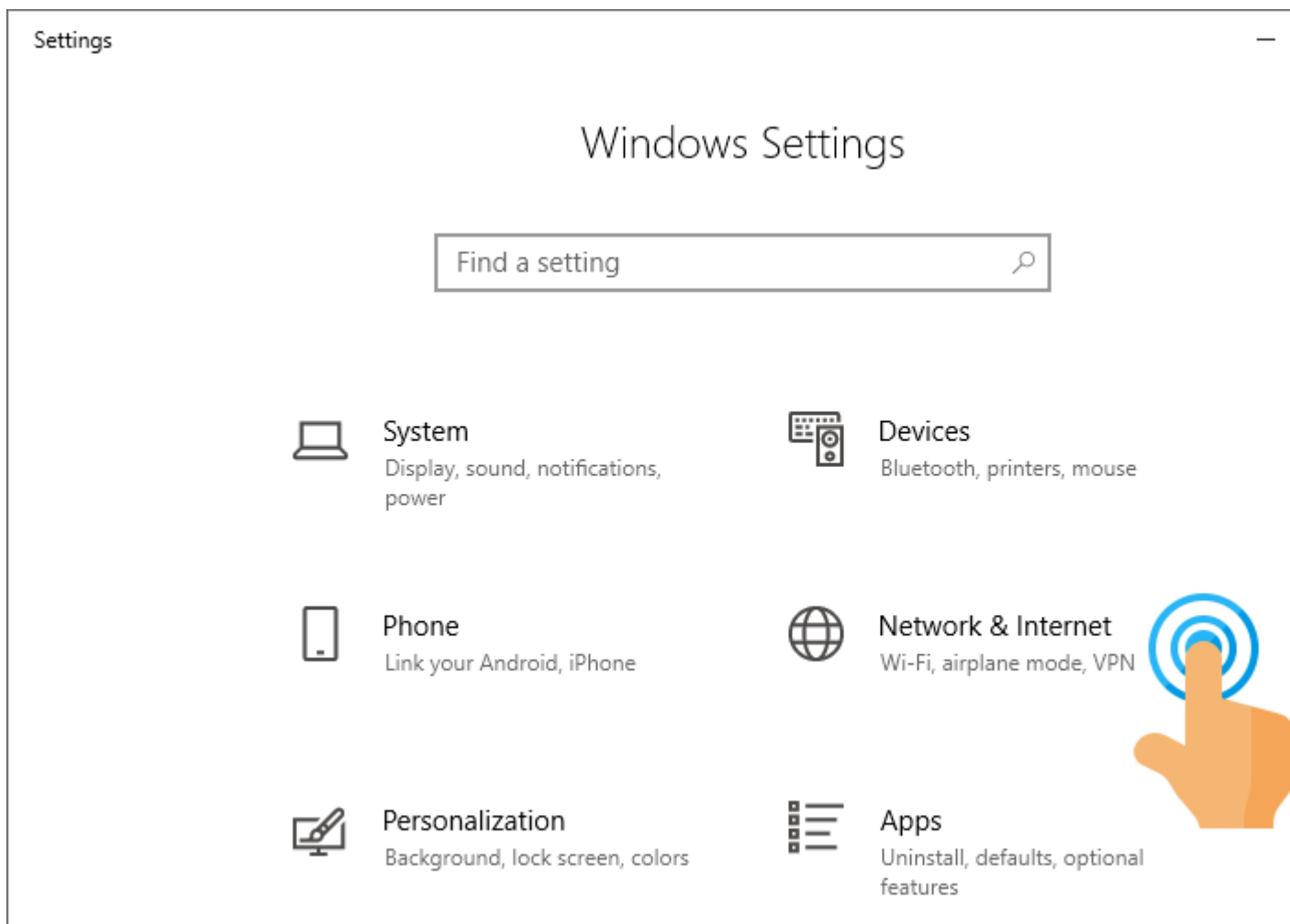


solutions in this article is for **Windows 10**. However, it can easily be reproduced in other Windows versions. But Windows 10 is normally the culprit.

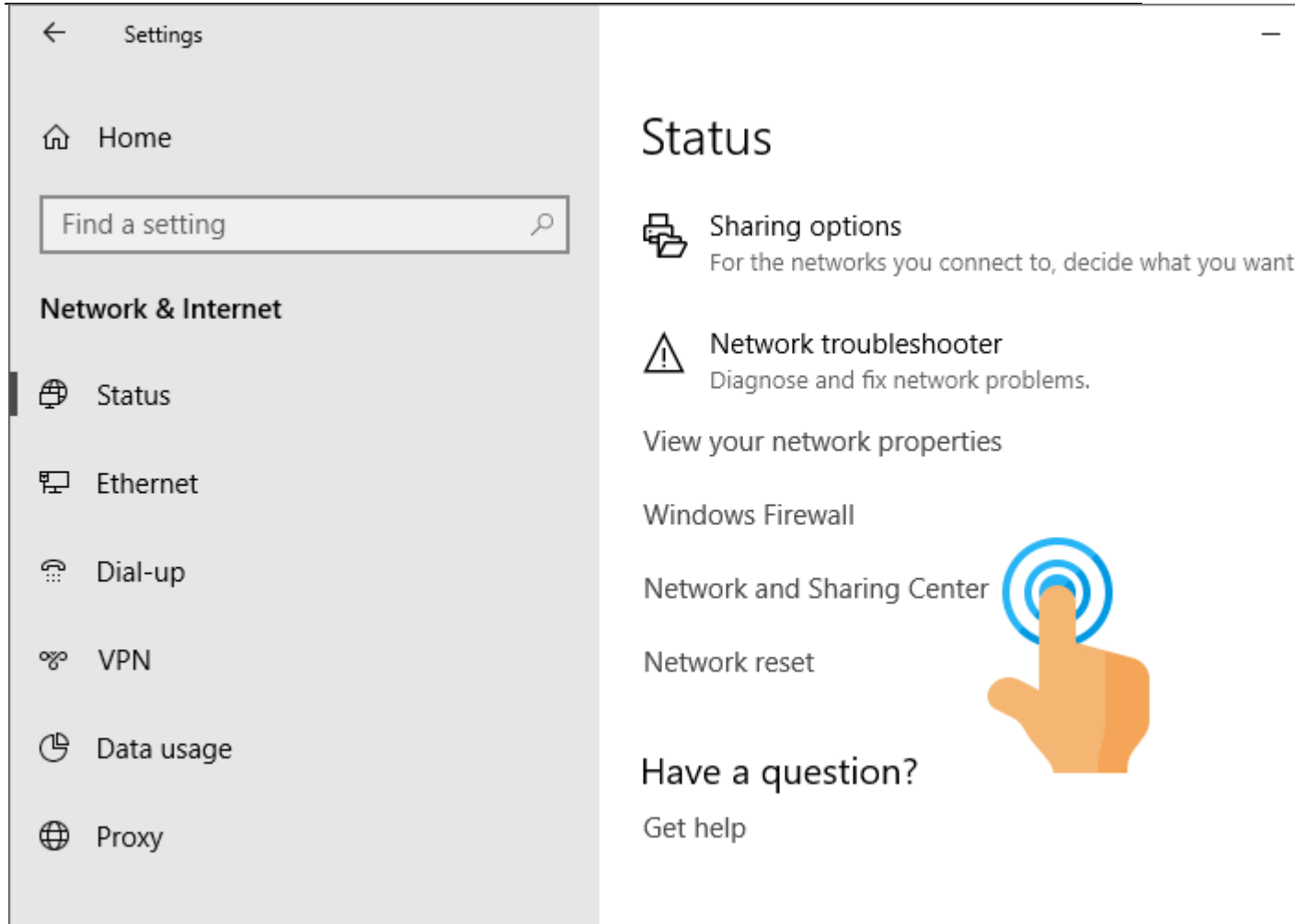
Turn password protected sharing off

Sometime, with a new Windows update, Password protected sharing can be turned on without you knowing. But, no matter how it was turned on, for network scanning or scan to folder to work, it must be turned off. Now, let's take a look at how to do this.

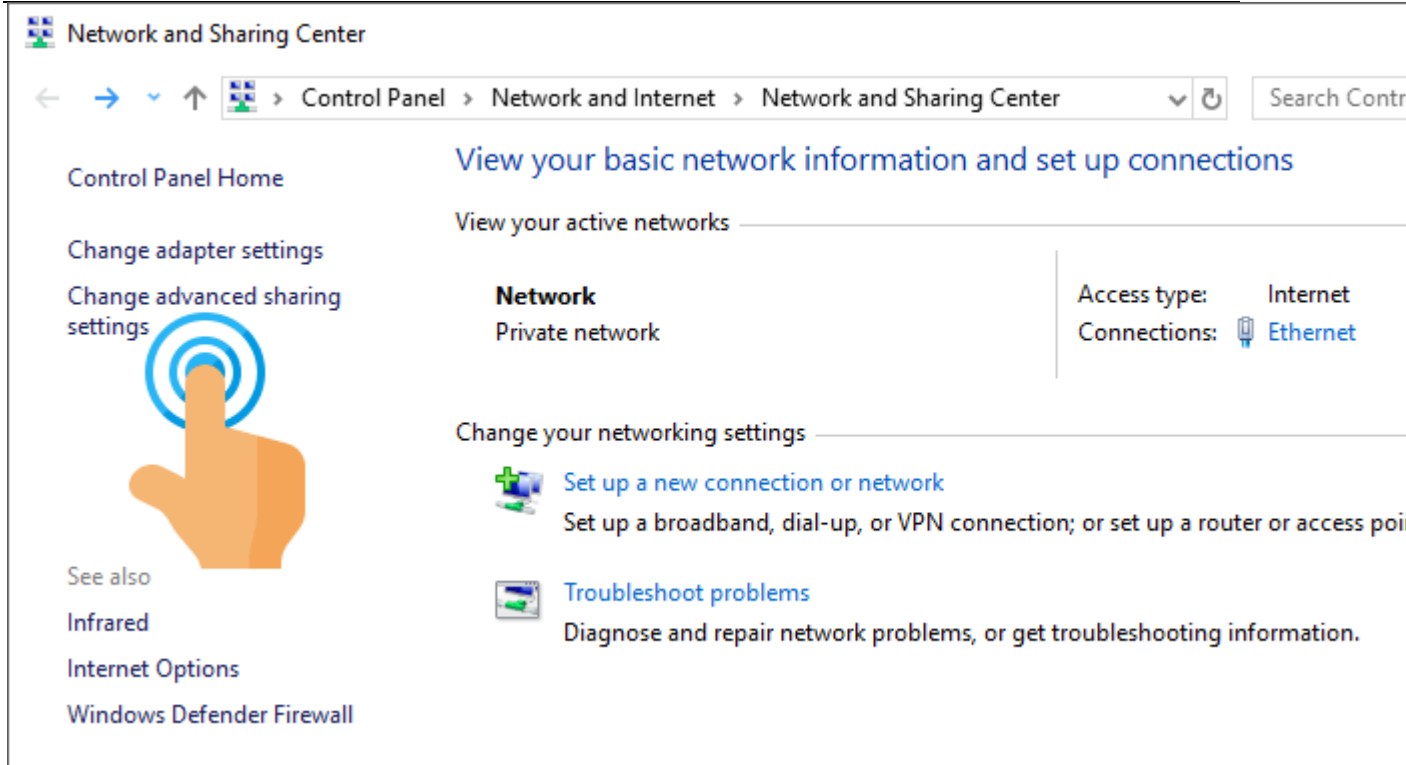
1. Go to **Start**, then select **Settings**.



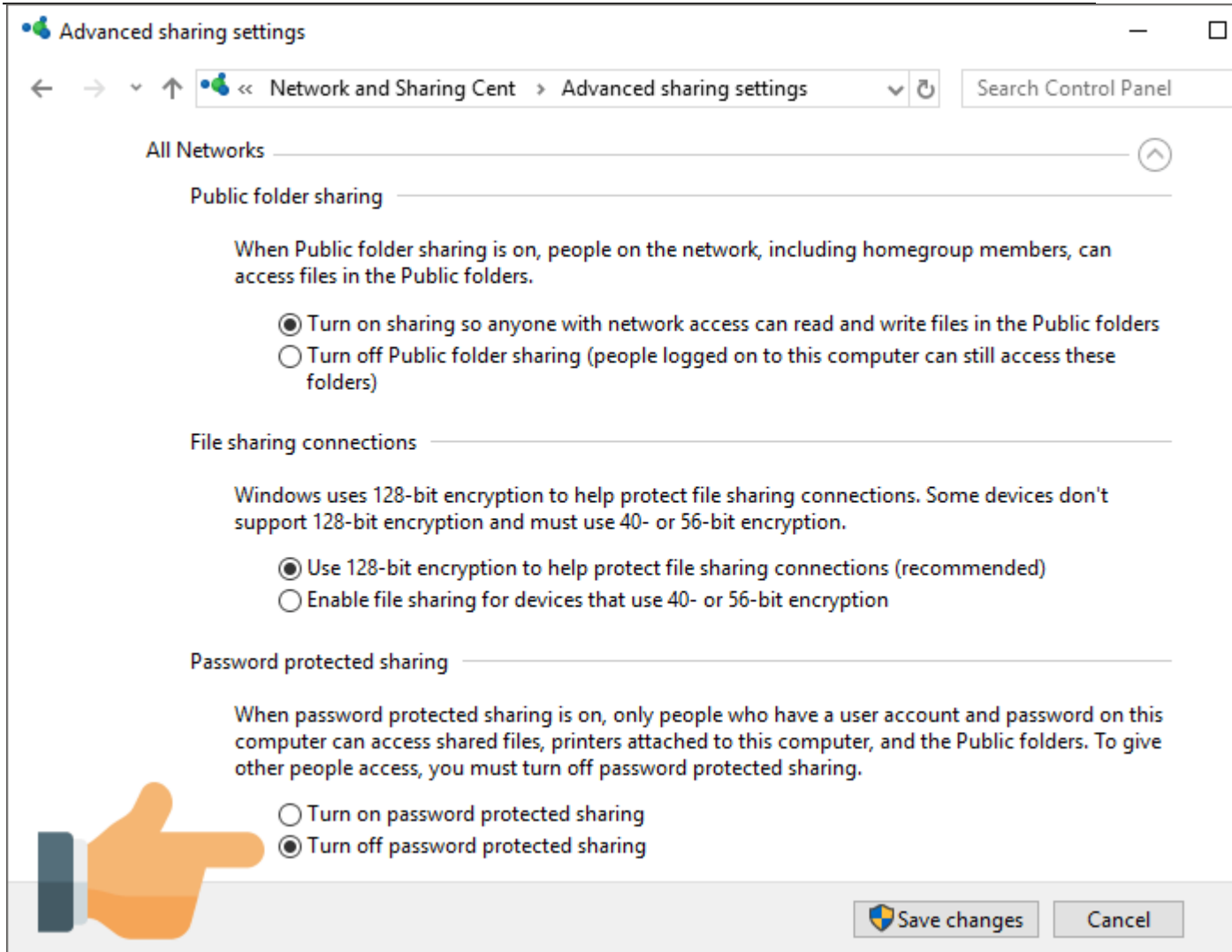
2. Click on **Network & Internet**, and then go to **Status**.



3. Click on **Network and Sharing Center**, and then in the Network and Sharing Center, click on **Change advanced sharing settings** in the right pane.



4. In **Advanced sharing settings**, expand **All Networks**, and under **Password protected sharing**, select **Turn off password protected sharing**.

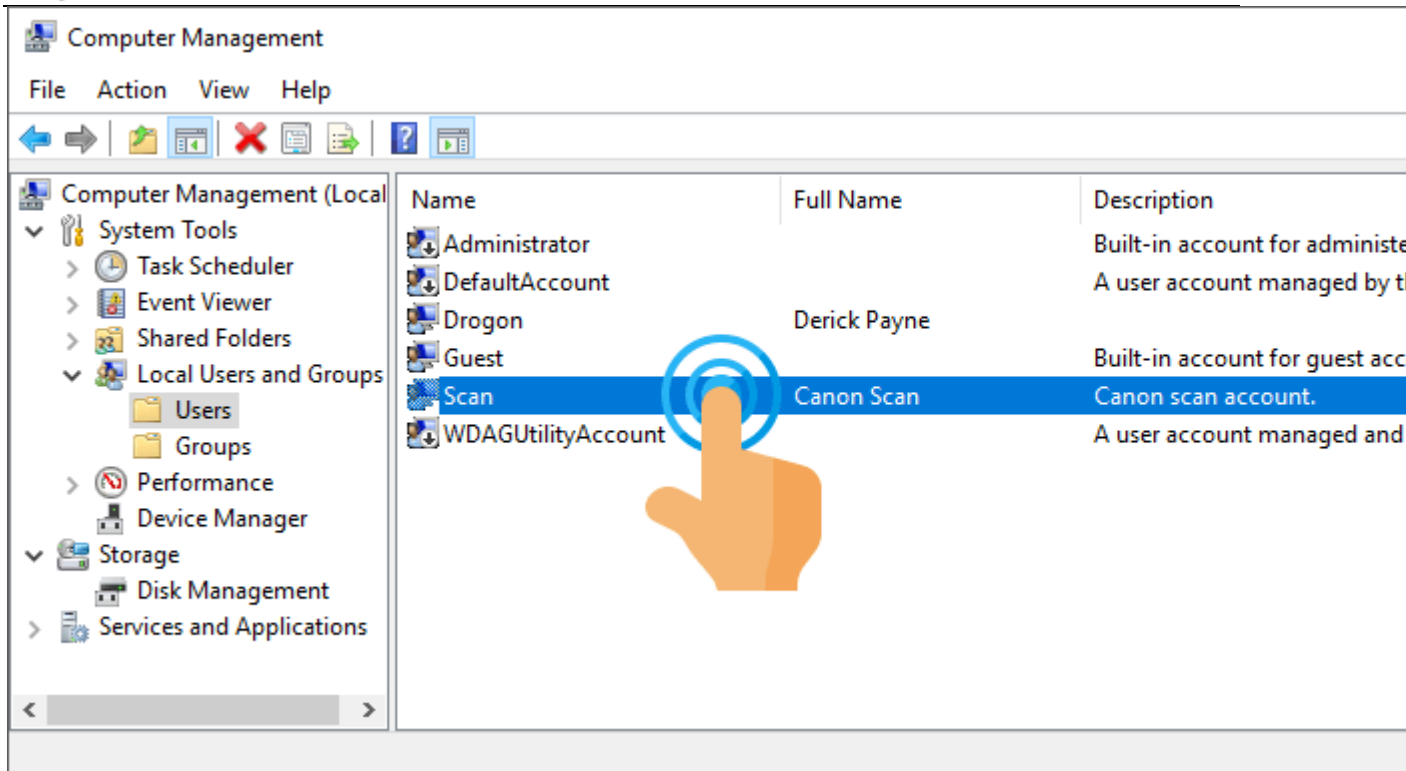


5. To finish, press **Save changes**.

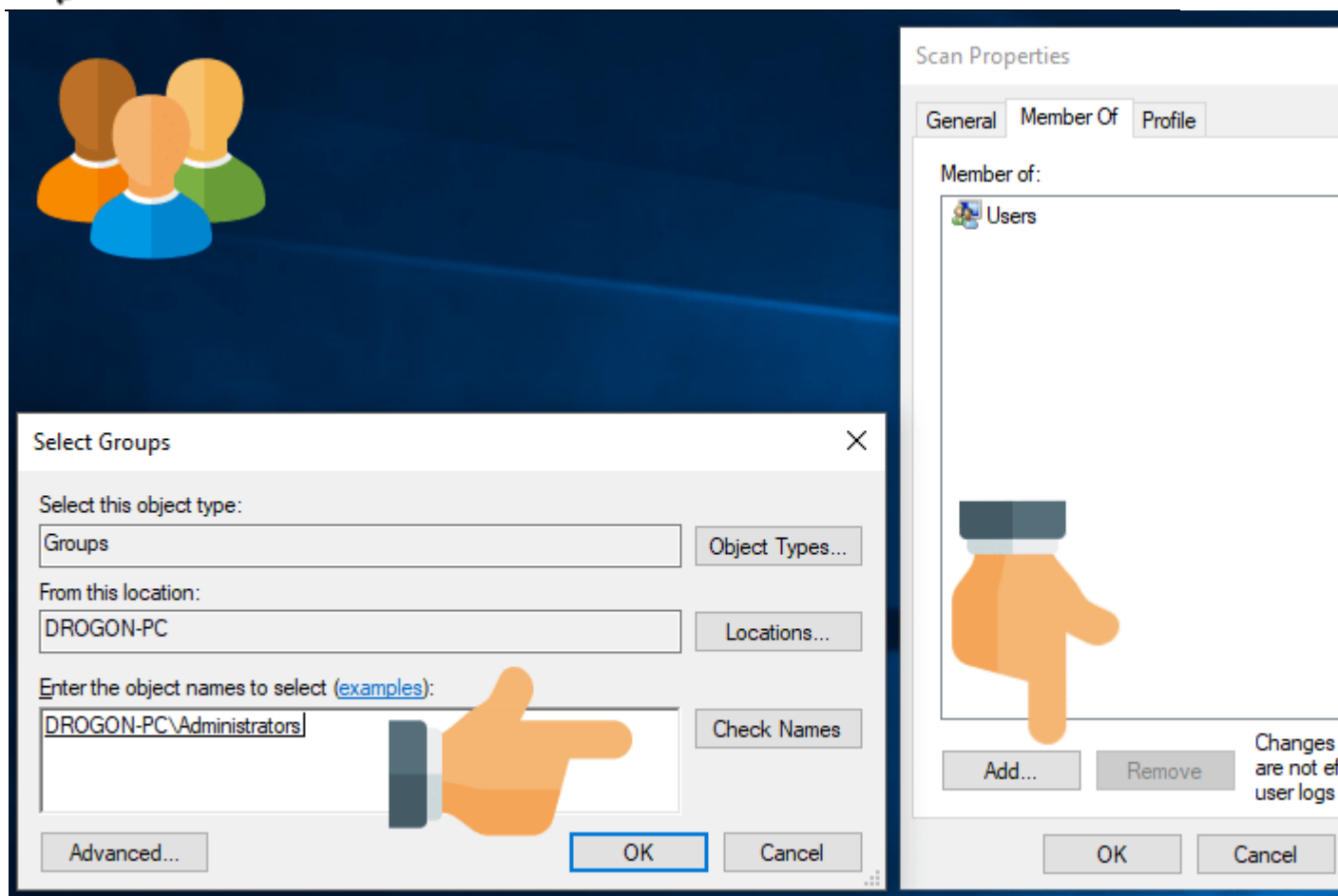
Scan account

Most scan to folder setups, use a scan user account to connect to a shared scan folder on a network. Therefore, if turning off password protected sharing did not solve your issue, the scan user account could be configured incorrectly. Here's how to fix it.

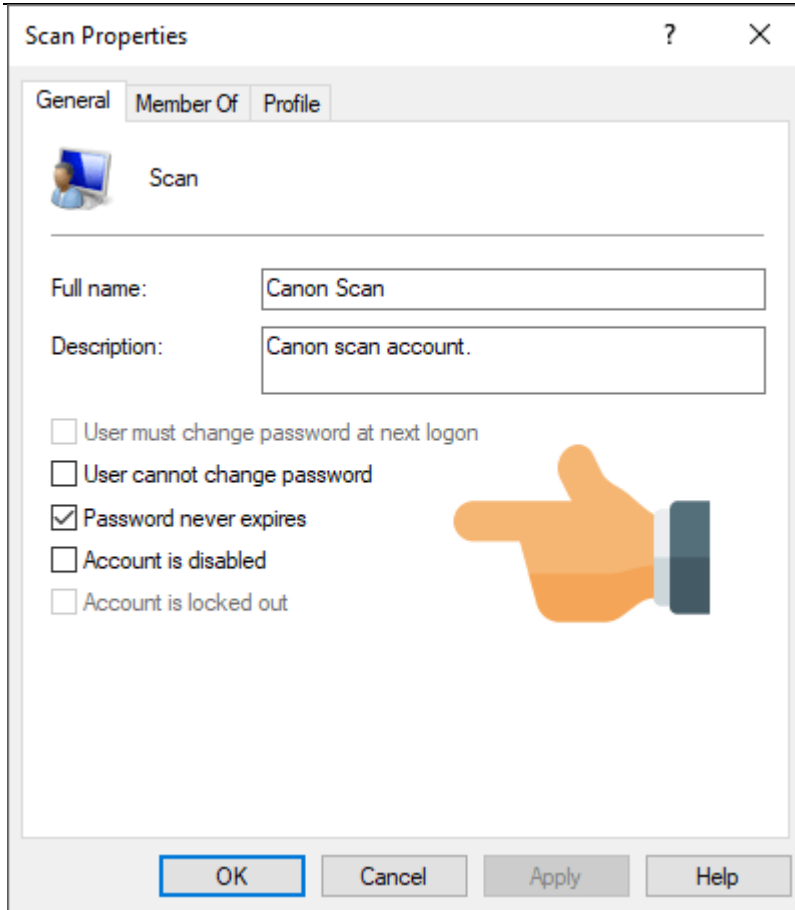
1. Right-click on the **Start** button and select **Computer Management**.
2. In the **Computer Management Console**, expand **Local Users and Groups**, select **Users** and locate the Scan user account. Please note that the Scan user account can be named anything else. But there should be a description explaining that the account is for scanning. Unfortunately, many people neglect entering a proper description when creating user accounts.



3. Double-click on the Scan user account to open its properties.
4. On the account **Properties** dialog, go to the **Member Of** tab. Look for **Administrators** in the list. If you can't find it, press **Add...**



5. On the Select Groups dialog, in the “**Enter the object names to select**” type **Administrators**. press **Check Names** and if you spelled it correctly, it will add your computer name followed by a backslash before Administrators. This lets you know that it found the Administrators group on your computer.
6. Press **OK** and then **Apply** on the account Properties dialog.
7. Still on the account Properties dialog, Go to the **General** tab. Make sure of the following; **User must change password at next logon** is not selected, **User cannot change password** is not selected, **Password never expires** is selected and **Account is disabled** should also not be selected. Or simply, just copy the configuration from the screenshot below.



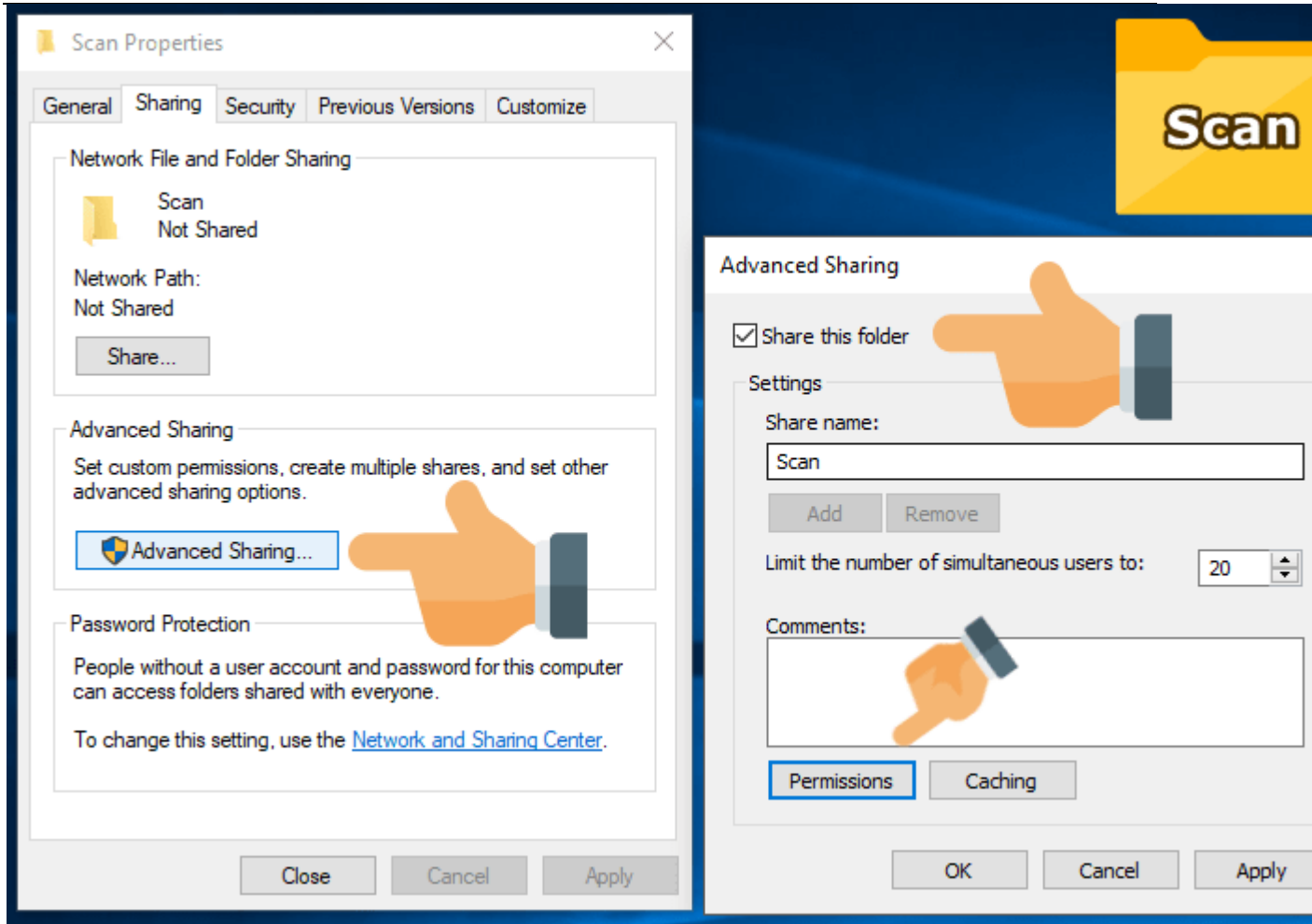
8. Press Apply to save the configuration.
9. Back on the **Computer Management Console**, right click on the Scan user account, select **Set Password...** and choose **Proceed** on the warning message box. On the **Set Password** dialog, type in a new password into the **New password** textbox, confirm the password in the **Confirm password** textbox and press **OK** to save the password.
10. Lastly, configure your printer/scanner with the new password.

Because we added the Scan user account to the Administrators group, you need to make sure to use a secure password. **Most hackers will target the scan account when trying to break into a computer.** So, use uppercase and lowercase letters, numbers and symbols. Furthermore, create a password with a minimum length of 12 characters. And no, Password1 is not a secure password.

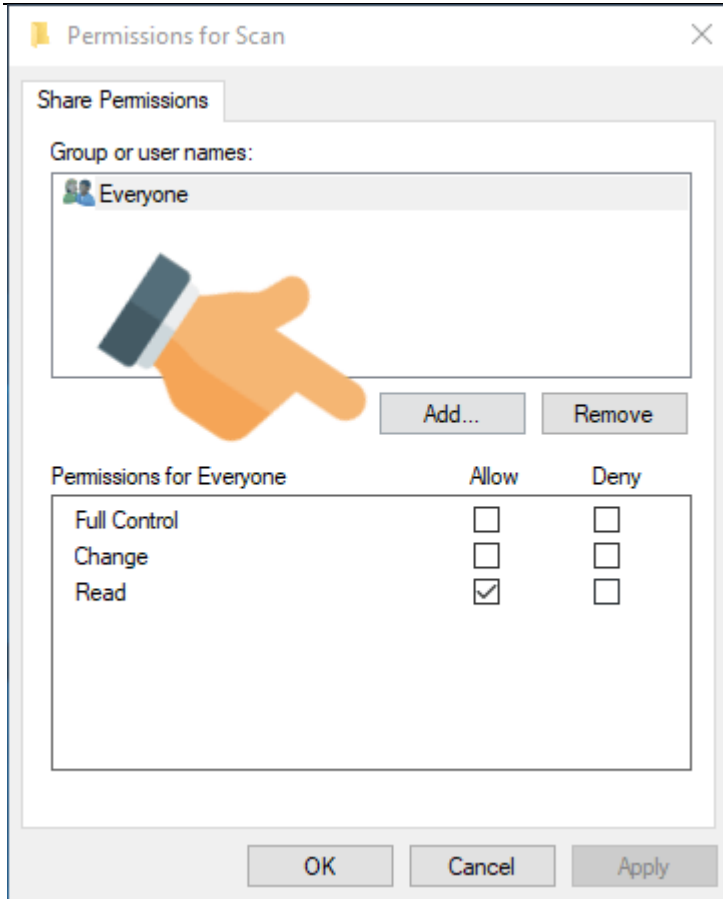
Sharing and permissions

If the steps above solve nothing, maybe there is a faulty share or the permissions on the scan folder is not configured correctly. Check the scan folder share and permissions.

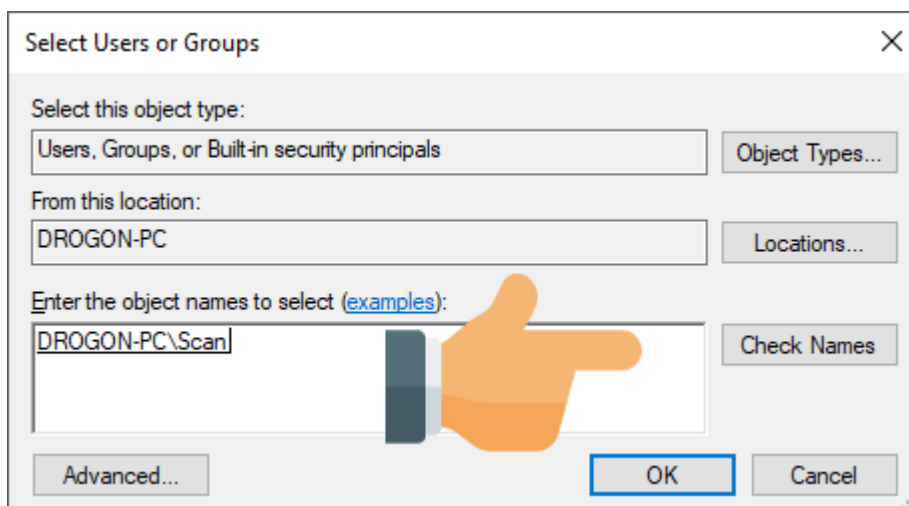
1. Right click on the scan folder and select **Properties**.
2. On the folder properties dialog, go to the **Sharing** tab and press the **Advanced Sharing...** button. Select **Share this folder** and press the **Permissions** button.



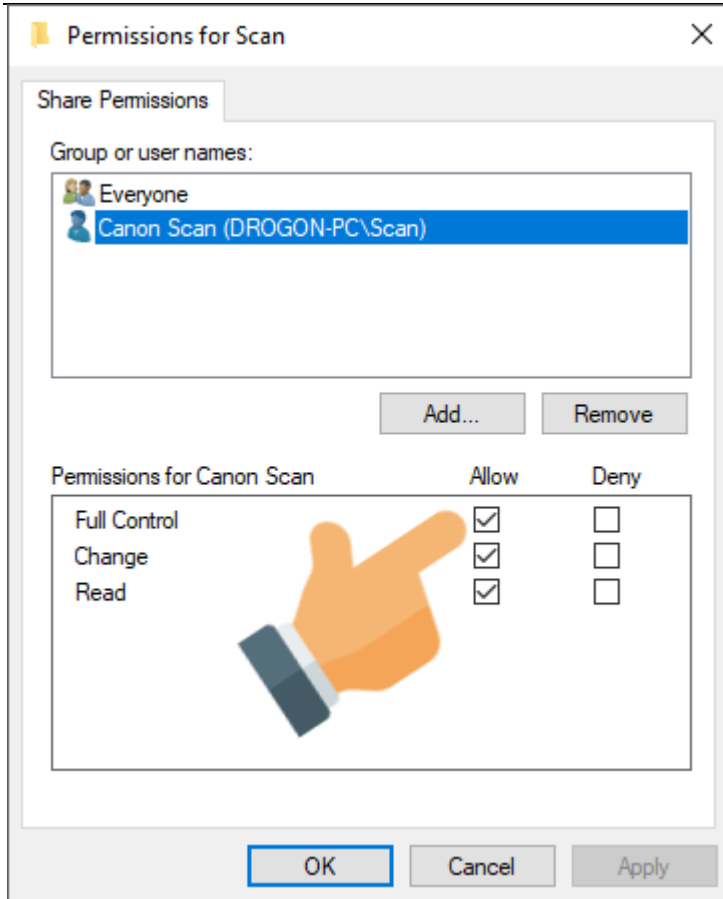
3. On the Permissions dialog, press **Add..** if you do not see the scan user in the list.



4. On the **Select Users or Groups** dialog, type your Scan account user name (Scan in my case) and press the **Check Names** button. Again, if it finds the user account, it will add your computer name followed with a backslash to the username. For example, on my computer it is DROGON-PC\Scan.



5. Press the **OK** button to add the selected user account to the Scan folder Permissions, **Group or user names** list.



- To finish, select the scan user account and set its permissions to **Full Control**. Press the **Apply** button to save the permissions.

Scan to folder should now be working. But, do not worry if it's not; just keep on reading.

SMB version 1.0

Because many network scanners still rely on the **SMB 1.0 / CIFS File Sharing Support** Windows feature, to function, installing it could also solve most **scan to folder** issues. However, it must only be installed if really necessary – **it was removed from Windows 10 for a reason**. And for this reason, this should be your last resort when fixing scan to folder issues.

What is SMB?

In computer networking, Server Message Block (SMB), one version of which was also known as Common Internet File System (CIFS), operates as an application-layer network protocol mainly used for providing shared access to files, printers, and serial ports and miscellaneous communications between nodes on a network. It also provides an authenticated inter-process communication mechanism.

Why was SMB version 1.0 Removed from Windows 10?

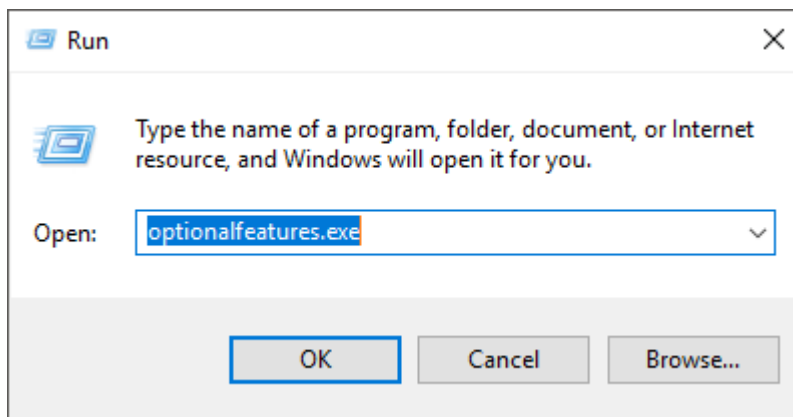


The Shadow Brokers leaked a set of hacking tools that works by exploiting SMB 1.0 security flaws. As if the situation was not bad enough, someone used one of these exploits to help create a nasty ransomware virus called [WannaCry](#) that caused mayhem all over the world. That said, if you have good virus protection installed and you use the internet responsibly you do not need to worry.

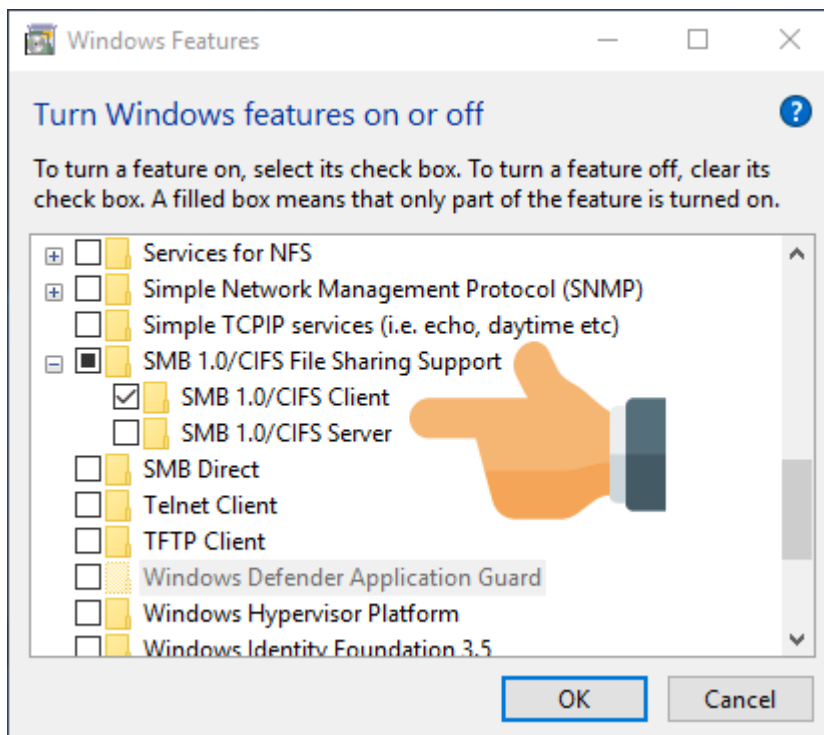
Install SMB version 1.0 in Windows 10

Now, let me show you how to install SMB 1.0 in Windows 10.

1. Press **Win + R** or Right click on the Start button and choose **Run** to open the Run dialog.
2. Type `optionalfeatures.exe` in the Run box and hit the Enter key to open the **Windows Features** dialog



3. Scroll down to and expand **SMB 1.0/CIFS File Sharing Support**. Now tick **SMB 1.0/CIFS Client** and untick **SMB 1.0/CIFS Server**.





4. Press **OK** to start the installation, wait for the installation to finish and press the **Restart now** button to restart your computer.

Conclusion

To conclude, I hope this article was useful and you managed to solve your scan to folder issue. With so many things that can go wrong with a network it is hard to mention all the possible fixes in one article. But, feel free to let me know if you want me to add anything or if I made a mistake somewhere. I am

always open to learn from my friends.

Weitere Quelle: <https://www.rizonesoft.com/solve-network-scan-to-folder-not-working/>



Fix Network Computers not Visible in File Explorer

By [Derick Payne](#) | October 8, 2018

[3 Comments](#)

It seems that with every new Windows 10 release comes a new set of bugs, and version 1803 is no exception. Many Windows 10 users experience network computers not showing up when browsing a network.

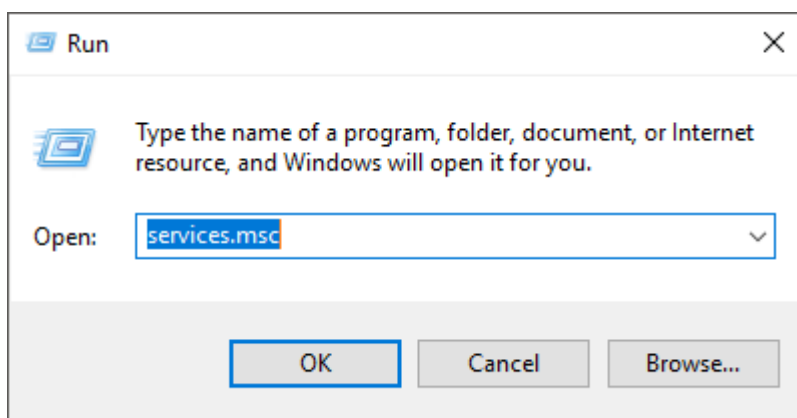
Basically, this issue is caused by the **Function Discovery Resource Publication** service not running by default. In other words, somebody broke something. Fortunately, the solution is so simple enough, but first a small introduction to this crucial service.

The **Function Discovery Resource Publication** service publishes a computer and its attached resources so they can be discovered over a network. If this service is stopped, network resources will no longer be published and they will not be discovered by other computers on a network.

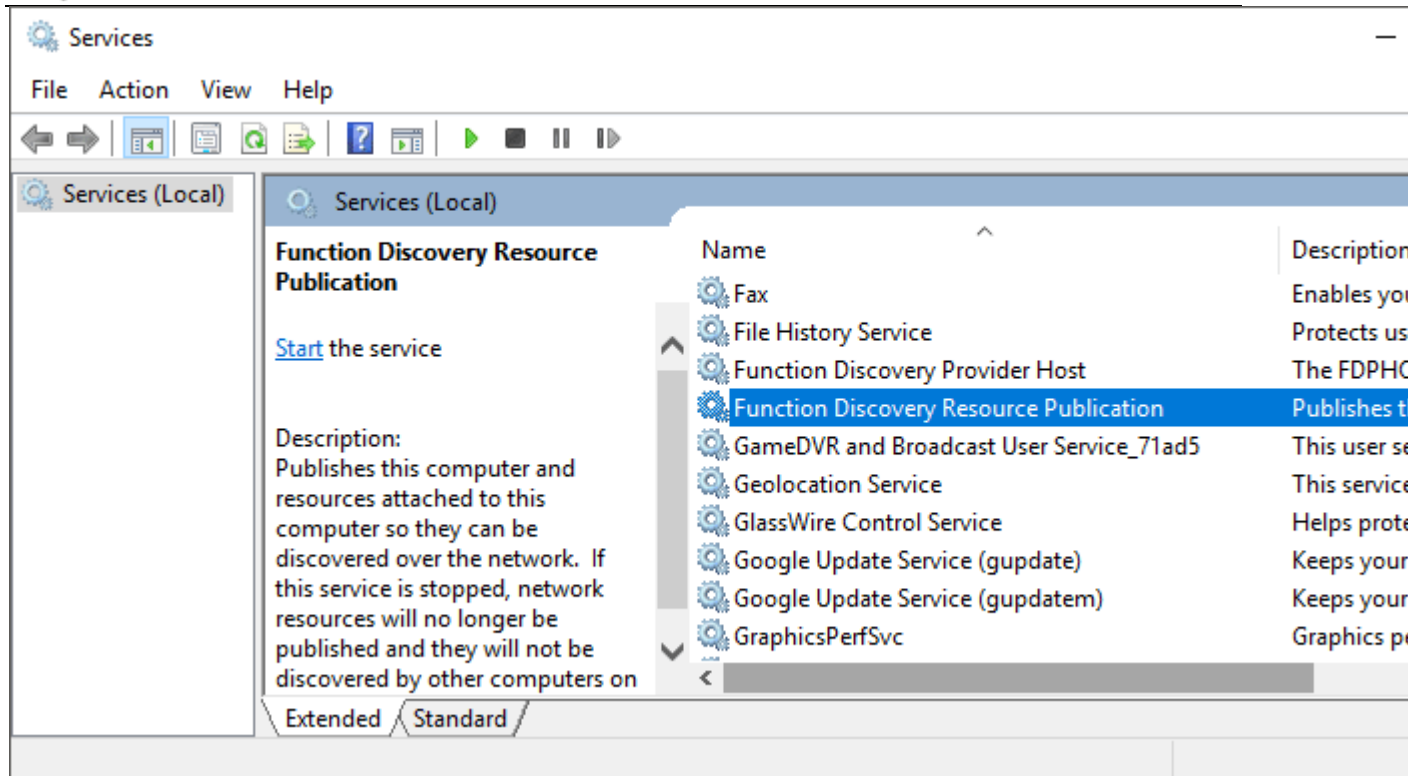
Method 1

Follow the steps below to configure and start the **Function Discovery Resource Publication** service.

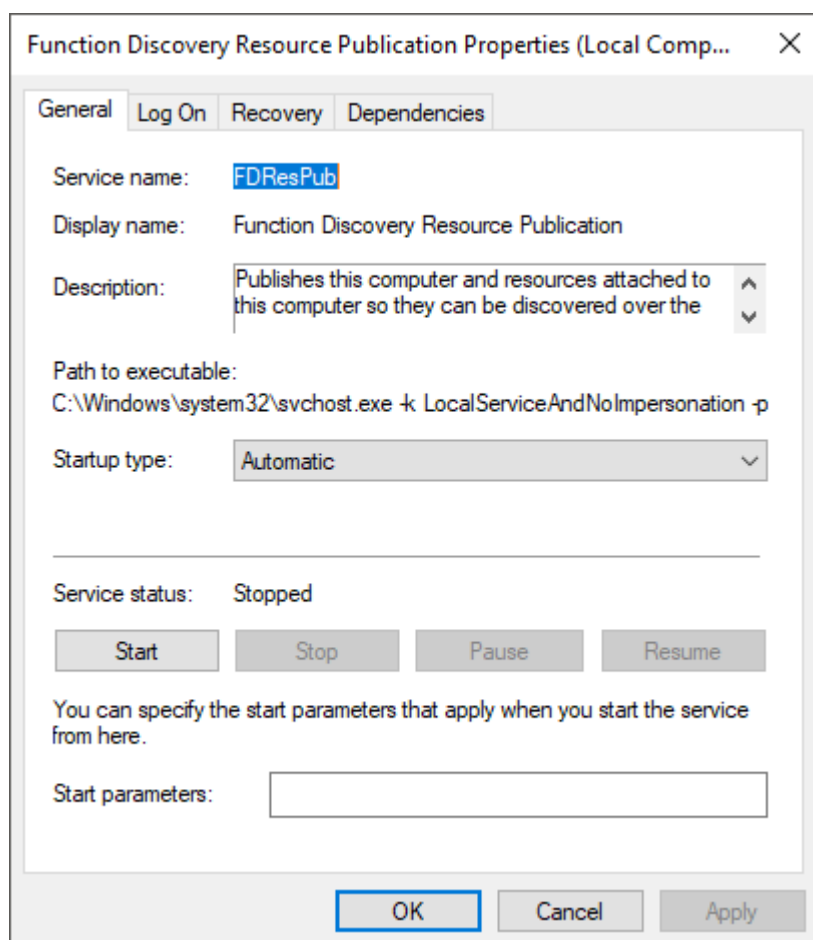
- 1) – Press `Win + R` or Right click on the Start button and choose **Run** to open the Run dialog.
- 2) – Type `services.msc` in the Run box and hit the `Enter` key.



- 3) – In the Services window, scroll down to the **Function Discovery Resource Publication** service.



- 4) – Double-click it to open its properties and set its startup type to **Automatic**.





- **5)** – Finally, start the service and press **OK**.

We prepared a quick video to show you the method above:

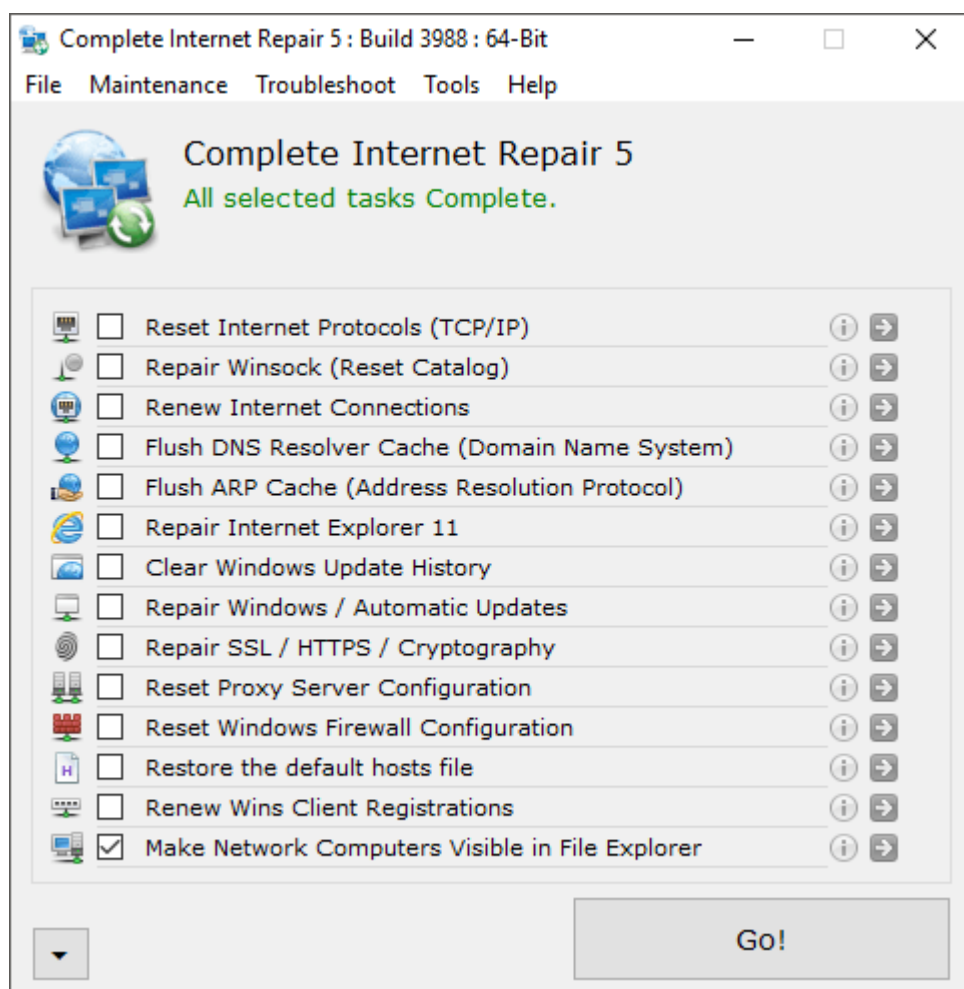
Hier findet man das Video:

<https://www.rizonsoft.com/fix-network-computers-not-visible-in-file-explorer/>

Method 2

[Complete Internet Repair](#) has the ability to make network computers visible again.

- **1)** – [Download and Install Complete internet Repair](#).
- **2)** – Select **Make Network Computers Visible in File Explorer**.



- **3)** Click the **Go!** button and your done.

All Network Computers should now be visible in File Explorer.



Conclusion

I am not one to say whether removing the HomeGroup feature was a good idea or not, but I am kind of glad it's gone. That said, many Windows 10 users will miss the simplicity. However, it also had its own issues that will not be missed.

Thank you for reading and I hope the article was useful enough. Feel free to leave a comment if I missed something or if you do not agree.

Weitere Quelle: <https://www.rizonesoft.com/fix-network-computers-not-visible-in-file-explorer/>