



Anleitung Netplwizard Problem bei 20H2

1. Press **WIN+R** keys together to launch RUN dialog box. Now type **regedit** and press Enter. It'll open **Registry Editor**.

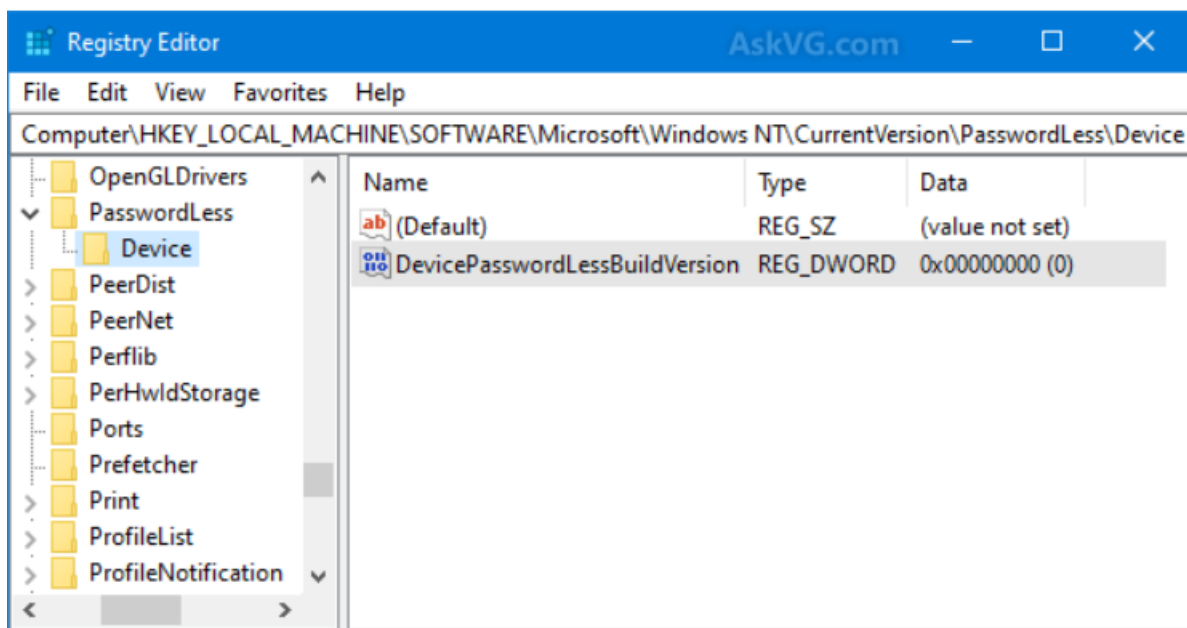
2. Now go to following key:

HKEY_LOCAL_MACHINE\SOFTWARE\Microsoft\Windows
NT\CurrentVersion\PasswordLess\Device

3. In right-side pane, look for **DevicePasswordLessBuildVersion** DWORD.

The value of this DWORD would be set to 2 in your device.

Double-click on **DevicePasswordLessBuildVersion** and change its value to **0**



That's it. Now open "control userpasswords2" or "netplwiz" programs and you'll get "Users must enter a user name and password to use this computer" checkbox back.

PS: If you don't want to modify Registry Editor manually or if you can't see above mentioned key in Registry, you can run following command in Command Prompt directly:

```
reg ADD "HKLM\SOFTWARE\Microsoft\Windows NT\CurrentVersion\PasswordLess\Device" /v DevicePasswordLessBuildVersion /t REG_DWORD /d 0 /f
```

It'll do the same job and bring back missing checkbox in Windows 10.

Big thanks to [Winaero](#) for finding the issue...



DIETMAR WALKER - PC-BLITZHELPER-NOTDIENST
Nationalgasse 14 • 72124 Pliezhausen • ☎ Tel. 07127 / 890 729 - Fax 89118
Internet: <http://www.pc-blitzhelfer.de> – Mobil 0172-882 79 55

Quelle: <https://www.askvg.com/fix-users-must-enter-a-user-name-and-password-to-use-this-computer-checkbox-missing-in-windows-10/>

Quelle: <https://winaero.com/microsoft-removes-user-autologin-in-windows-10-version-2004/>